

## ADDENDUM NO. 1

---

**Owner:** Snohomish County  
Fire District # 21

**Date:** 3/30/22

**Project:** 1744 – New Fire Station No. 50

### **NOTICE TO BIDDERS**

To the Prime Bidders and all “Plan Holders of Record”:

You are hereby notified of the following additions, deletions, modifications or clarifications to the drawings and specifications for the above referenced project. This Addendum forms a part of the Contract Documents and shall be bound inside the front cover of the Project Manual.

### **BE SURE TO ACKNOWLEDGE THIS ADDENDUM ON YOUR BID / PROPOSAL FORM**

The following information is to be issued to all plan holders of record. However, prior to the bid opening it is the specific responsibility of each general and separate contractor to notify his subcontractors, suppliers, etc., and to verify with all items covered by the Contract Documents, including addenda, as relating to their bids.

### **DIVISION 00 – PROCUREMENT AND CONTRACTING REQUIREMENTS:**

1. Builders Risk Insurance: Snohomish County Fire District #21 will carry the Builder’s Risk Insurance.
  - a. Both earthquake and flood insurance are covered.
  - b. General Contractor is responsible for any deductibles on insurance’s the General Contractor provides.
2. Refer to Specification 00 2200 Supplemental Instructions to Bidders
  - a. Revised section 1.7.B.2: For the purposes of meeting this criterion, the Owner has determined that “similar size and scope to this project” means publicly bid or competitively negotiated buildings including government offices, civic/legislative facilities, public safety facilities, schools, libraries, convention centers, community centers, and fire service facilities which are complete building projects including but not limited to site work, utilities, grading, paving, landscaping, foundations, structures and finishes. Contract values must be a minimum of 5 million dollars (\$5,000,000).

### **ARCHITECTURAL SPECIFICATION**

1. Refer to Specification Section 07 2700 Weather and Air Barriers
  - a. Add: 2.1.B.3
    3. Liquid Applied Flashing:
      - a. Moisture-curing single component elastomeric liquid-applied flashing using a highly advanced Silyl-Terminated Polyether (STPE) polymer curing to a monolithic membrane; having the following typical physical properties:
        - 1) Air Permeance (ASTM E2178): Pass
        - 2) Water Vapor Permeance (ASTM E96): 21.8 perms @ 25 mils
        - 3) Air Leakage of Air Barrier Assemblies (ASTM E2357): Pass

- 4) Water Resistance (AC212/ASTM D2247): Pass
  - 5) Nail Sealability (AAMA 711): Pass
  - 6) Surface Burning Characteristics (ASTM E84):
  - 7) Flame Spread: Class A
  - 8) Smoke Development: Class A
  - 9) Elongation (D412): 264%
  - 10) Low Application Temperature: 20 degrees F (-7 degrees C)
2. Refer to Specification Section 08 5413 Fiberglass Windows
    - a. Clarification: 3.4.C - Testing shall be completed prior to installation of cladding
    - b. Modify: 3.4.C.1 - Testing Methodology: Testing of windows for air infiltration and water resistance shall be performed according to AAMA 501.2 (spray nozzle).
    - c. Modify: 3.4.C.6 - Test Reports: Prepared according to AAMA 501.2 (spray nozzle).
  3. Refer to Division 9
    - a. Add: Specification Section 09 6813 Tile Carpeting
  4. Refer to Specification 10 2800 Toilet Accessories:
    - a. Add:
      - 2.12 Baby Changing Station
        - A. Baby Changing Station: Koala Kare Vertical Stainless Steel Recessed Mounted Change Station, KB311-SSRE (provide 1 at room 103).
  5. Refer to Specification 10 4416 Fire Extinguishers
    - a. Replace 2.2.B as follows:
      - B. Multipurpose Dry-Chemical Type: UL-rated 2-A:10B-C nominal capacity, with monoammonium phosphate-based dry chemical in manufacturer's standard enameled container.

#### **ARCHITECTURAL DRAWINGS:**

1. Refer to 1/A5.1 – Washer and Dryer shall be contractor provided/ contractor installed. Refer to specification 11 3100 Appliances.
2. Refer to detail 3/A5.1 – Refrigerators and dishwasher shall be contractor provided/ contractor installed. Refer to specification 11 3100 Appliances.
3. Refer to detail 15/A7.2 – Refrigerators shall be contractor provided/ contractor installed. Refer to specification 11 3100 Appliances.
4. Refer to detail 4/A7.4 – Washer and Dryer shall be contractor provide/ contractor installed. Refer to specification 11 3100 Appliances.
5. Refer to detail 9/A7.4 – Washer Extractor shall be contractor provided/ contractor installed. Refer to specification 11 3100 Appliances.
6. Refer to detail 12/A10.2 – Gutter Profile: Replace detail in entirety with attached ADD1/ ASK 1 Revised Gutter Profile
7. Refer to detail 3/A10.2 – Typical Ridge/ Hip: Replace detail in entirety with attached ADD1/ ASK 2 Revised Typical Ridge/ Hip
8. Refer to detail 7/A10.2 – Ridge at Entry: Replace detail in entirety with attached ADD1/ ASK 2 Revised Ridge at Entry
9. Refer to detail 16/A10.4 – Signage Attachment at CMU Veneer: Replace detail in entirety with attached ADD1/ ASK 3 Revised Signage Attachment at CMU Veneer.

10. Refer to detail 20/A10.4 – Signage Attachment at Siding: Replace detail in entirety with attached ADD1/ASK 3 Revised Signage Attachment at Siding.

#### **ARCHITECTURAL APPROVALS:**

The following items have been approved for bidding:

These approvals are for quality only. No attempt has been made to check each material as to the special features, capacities or physical dimensions especially required by this project. It shall be the responsibility of the supplier, manufacturer and the contractor to check all requirements before submitting for final approval. Final approval of exact features, sizes, capacities, etc., all of which must match materials indicated specified, will be determined when submitted during construction period. Certain approvals are subject to conditions noted. Equipment and/or furnishings listed in this addendum from supplier's literature and brochures will be approved per conditions listed above. After all addenda have been issued, all previously submitted equipment and/or furnishings not listed have been rejected.

<b>APPROVALS - Architectural</b>		
<b>SECTION</b>	<b>ITEM</b>	<b>MANUFACTURER</b>
07 7200-2.1.A	Fall Protection System	MK Fall Protection Inc.

#### **MECHANICAL EQUIPMENT APPROVALS:**

The following equipment is approved for bidding, subject to all requirements of the Plans and Specifications. Equipment is to provide the same performance, including acoustical performance, and have the same dimensions and weights as the equipment used for the basis of design.

<b>EQUIPMENT APPROVALS – Mechanical</b>		
<b>SECTION</b>	<b>ITEM</b>	<b>MANUFACTURER</b>
32 0593-1.6	Acceptable Test and Balance Companies	TAC Services, LLC

#### **STRUCTURAL DRAWINGS:**

1. Refer to Sheet S2.2 Second Floor Framing Plan, Plan Note 2 – Concrete topping at 2nd Floor shall be normal-weight concrete.

PART 1 - GENERAL

1.1 RELATED DOCUMENTS

- A. Drawings and general provisions of the Contract, including General and Supplementary Conditions and Division 01 Specification Sections, apply to this Section.

1.2 SUMMARY

- A. Section includes modular carpet tile.
- B. Related Requirements:
  - 1. Section 096513 "Resilient Base and Accessories for resilient wall base and accessories installed with carpet tile.

1.3 ACTION SUBMITTALS

- A. Product Data: For each type of product.
  - 1. Include manufacturer's written data on physical characteristics, durability, and fade resistance.
  - 2. Include manufacturer's written installation recommendations for each type of substrate.
- B. Shop Drawings: For carpet tile installation, plans showing the following:
  - 1. Columns, doorways, enclosing walls or partitions, built-in cabinets, and locations where cutouts are required in carpet tiles.
  - 2. Carpet tile type, color, and dye lot.
  - 3. Type of subfloor.
  - 4. Type of installation.
  - 5. Pattern of installation.
  - 6. Pattern type, location, and direction.
  - 7. Type, color, and location of edge, transition, and other accessory strips.
  - 8. Transition details to other flooring materials.
- C. Samples: For each of the following products and for each color and texture required. Label each Sample with manufacturer's name, material description, color, pattern, and designation indicated on Drawings and in schedules.
  - 1. Carpet Tile: Full-size Sample.
- D. Samples for Initial Selection: For each type of carpet tile.
  - 1. Include Samples of exposed edge, transition, and other accessory stripping involving color or finish selection.
- E. Product Schedule: For carpet tile. Use same designations indicated on Drawings.

1.4 INFORMATIONAL SUBMITTALS

- A. Qualification Data: For Installer.
- B. Product Test Reports: For carpet tile, for tests performed by a qualified testing agency.
- C. Sample Warranty: For special warranty.

1.5 CLOSEOUT SUBMITTALS

- A. Maintenance Data: For carpet tiles to include in maintenance manuals. Include the following:
  - 1. Methods for maintaining carpet tile, including cleaning and stain-removal products and procedures and manufacturer's recommended maintenance schedule.
  - 2. Precautions for cleaning materials and methods that could be detrimental to carpet tile.

1.6 MAINTENANCE MATERIAL SUBMITTALS

- A. Furnish extra materials, from the same product run, that match products installed and that are packaged with protective covering for storage and identified with labels describing contents.
  - 1. Carpet Tile: Full-size units equal to but not less than 16 yds or 2 Cartons.

1.7 QUALITY ASSURANCE

- A. Installer Qualifications: An experienced installer who is certified by the International Certified Floorcovering Installers Association at the Commercial II certification level.

1.8 DELIVERY, STORAGE, AND HANDLING

- A. Comply with CRI's "CRI Carpet Installation Standard."

1.9 FIELD CONDITIONS

- A. Comply with CRI's "CRI Carpet Installation Standard" for temperature, humidity, and ventilation limitations.
- B. Environmental Limitations: Do not deliver or install carpet tiles until spaces are enclosed and weathertight, wet-work in spaces is complete and dry, and ambient temperature and humidity conditions are maintained at levels planned for building occupants during the remainder of the construction period.
- C. Do not install carpet tiles over concrete slabs until slabs have cured and are sufficiently dry to bond with adhesive and concrete slabs have pH range recommended by carpet tile manufacturer.

1.10 WARRANTY

- A. Special Warranty for Carpet Tiles: Manufacturer agrees to repair or replace components of carpet tile installation that fail in materials or workmanship within specified warranty period.

1. Warranty does not include deterioration or failure of carpet tile due to unusual traffic, failure of substrate, vandalism, or abuse.
2. Failures include, but are not limited to, the following:
  - a. More than 10 percent edge raveling, snags, and runs.
  - b. Dimensional instability.
  - c. Excess static discharge.
  - d. Loss of tuft-bind strength.
  - e. Loss of face fiber.
  - f. Delamination.
3. Warranty Period: 10 years from date of Final Completion.

## PART 2 - PRODUCTS

### 2.1 CARPET TILE

- A. Basis of Design Manufacturer: Mannington – Align (Modular) Quadrant carpet tile. Subject to compliance with requirements, manufacturers offering products that may be incorporated into the Work include the following:
  1. Mohawk – First One Up II
  2. Millikan – Nordic Stories, Hidden Plains
  3. Approved Equal
- B. Construction: Textured Patterned Loop
- C. Face Fiver: 6,6 Nylon
- D. Dye Method: Solution/ Yarn
- E. Gauge: 4/64 (50.39 per 10cm)
- F. Pile Density: 7,269oz/y3 (270.10 kg/m3)
- G. Stitches: 9.67 per inch (38.07 per 10 cm)
- H. Pile Thickness: 0.104" (2.64 cm)
- I. Backing Type: Infinity 2 Modular
- J. Weight: 21oz/ sy (712 grams/m2)
- K. Standard Size: 24"x24" (approx.) (60.96cmx60.96cm)
- L. Color: As Selected by Architect from manufacturer's full range
  1. Allow for 2 carpet colors
- M. Pattern Repeat: N/A

- N. Adhesive: Infinity 2 adhesive
- O. Installation Method: Horizontal Brick Ashlar
- P. Applied Treatments:
  - 1. Soil-Resistance Treatment: Manufacturer's standard treatment
  - 2. Antimicrobial Treatment: Manufacturer's standard treatment that protects carpet tiles as follows:
    - a. Antimicrobial Activity: Not less than 2-mm halo of inhibition for gram-positive bacteria, not less than 1-mm halo of inhibition for gram-negative bacteria, and no fungal growth, according to AATCC 174.
- Q. Performance Characteristics:
  - 1. Appearance Retention Rating: TARR Rating of 4.0 for Severe Traffic.
  - 2. Critical Radiant Flux Classification: Not less than [0.45 W/sq. cm] [0.22 W/sq. cm] according to NFPA 253.
  - 3. Dimensional Tolerance: Within 1/32 inch (0.8 mm) of specified size dimensions, as determined by physical measurement.
  - 4. Dimensional Stability: 0.2 percent or less according to ISO 2551 (Aachen Test).
  - 5. Colorfastness to Crocking: Not less than 4, wet and dry, according to AATCC 165.
  - 6. Colorfastness to Light: Not less than 4 after 40 AFU (AATCC fading units) according to AATCC 16, Option E.
  - 7. Electrostatic Propensity: Less than 3.5kV according to AATCC 134.

## 2.2 INSTALLATION ACCESSORIES

- A. Trowelable Leveling and Patching Compounds: Latex-modified, hydraulic-cement-based formulation provided or recommended by carpet tile manufacturer.
- B. Adhesives: Water-resistant, mildew-resistant, nonstaining, pressure-sensitive type to suit products and subfloor conditions indicated, that comply with flammability requirements for installed carpet tile, and are recommended by carpet tile manufacturer for releasable installation.
- C. Carpet reducer/Edge Moldings: Moldings as manufactured by Mercer Plastics Company or accepted. Colors to be selected by architect.

## PART 3 - EXECUTION

### 3.1 EXAMINATION

- A. Examine substrates, areas, and conditions, with Installer present, for compliance with requirements for maximum moisture content, alkalinity range, installation tolerances, and other conditions affecting carpet tile performance.
- B. Examine carpet tile for type, color, pattern, and potential defects.

- C. Concrete Slabs: Verify that finishes comply with requirements specified in Section 033000 "Cast-in-Place Concrete" and that surfaces are free of cracks, ridges, depressions, scale, and foreign deposits.
  - 1. Moisture Testing: Perform tests so that each test area does not exceed 200 sq. ft. (18.6 sq. m) and perform no fewer than three tests in each installation area and with test areas evenly spaced in installation areas.
    - a. Anhydrous Calcium Chloride Test: ASTM F 1869. Proceed with installation only after substrates have maximum moisture-vapor-emission rate of [3 lb of water/1000 sq. ft. (1.36 kg of water/92.9 sq. m)] in 24 hours.
    - b. Relative Humidity Test: Using in situ probes, ASTM F 2170. Proceed with installation only after substrates have a maximum 75 percent relative humidity level measurement.
    - c. Perform additional moisture tests recommended in writing by adhesive and carpet tile manufacturers. Proceed with installation only after substrates pass testing.
- D. Proceed with installation only after unsatisfactory conditions have been corrected.

### 3.2 PREPARATION

- A. General: Comply with CRI's "Carpet Installation Standards" and with carpet tile manufacturer's written installation instructions for preparing substrates indicated to receive carpet tile.
- B. Use trowelable leveling and patching compounds, according to manufacturer's written instructions, to fill cracks, holes, depressions, and protrusions in substrates. Fill or level cracks, holes and depressions 1/8 inch (3 mm) wide or wider, and protrusions more than 1/32 inch (0.8 mm) unless more stringent requirements are required by manufacturer's written instructions.
- C. Concrete Substrates: Remove coatings, including curing compounds, and other substances that are incompatible with adhesives and that contain soap, wax, oil, or silicone, without using solvents. Use mechanical methods recommended in writing by adhesive and carpet tile manufacturers.
- D. Broom and vacuum clean substrates to be covered immediately before installing carpet tile.

### 3.3 INSTALLATION

- A. General: Comply with CRI's "CRI Carpet Installation Standard," Section 18, "Modular Carpet" and with carpet tile manufacturer's written installation instructions.
- B. Installation Method: As recommended in writing by carpet tile manufacturer
- C. Maintain dye-lot integrity. Do not mix dye lots in same area.
- D. Maintain pile-direction patterns recommended in writing by carpet tile manufacturer.
- E. Cut and fit carpet tile to butt tightly to vertical surfaces, permanent fixtures, and built-in furniture including cabinets, pipes, outlets, edgings, thresholds, and nosings. Bind or seal cut edges as recommended by carpet tile manufacturer.
- F. Extend carpet tile into toe spaces, door reveals, closets, open-bottomed obstructions, removable flanges, alcoves, and similar openings.

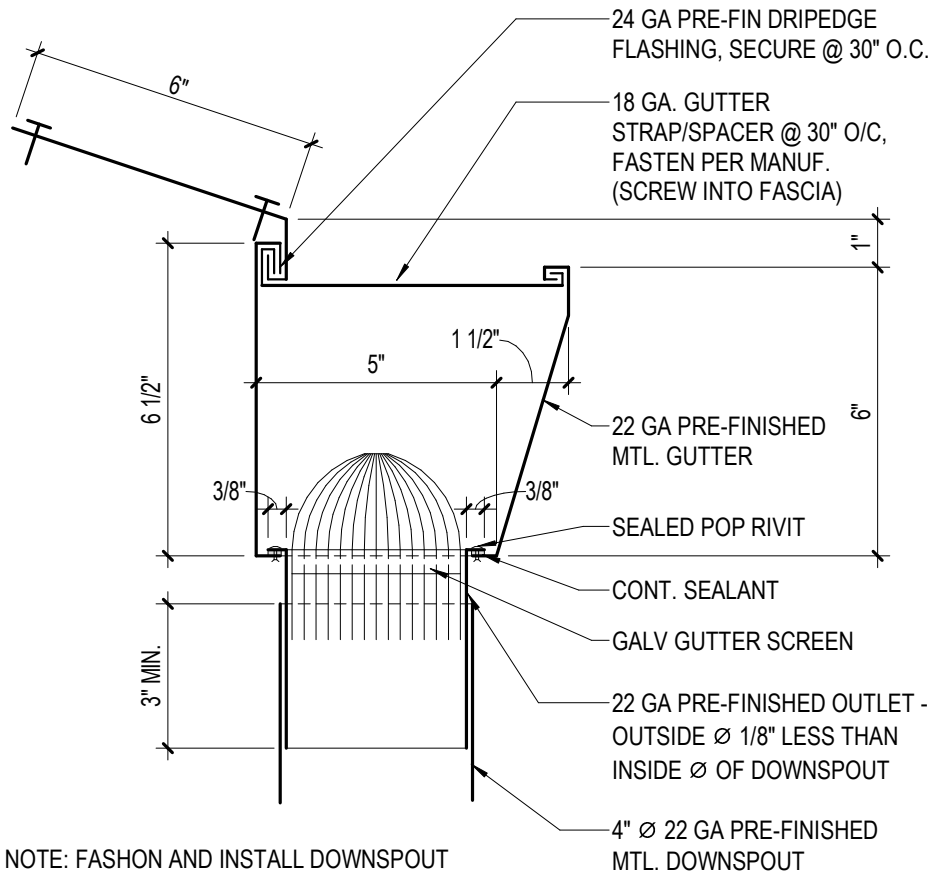


- G. Maintain reference markers, holes, and openings that are in place or marked for future cutting by repeating on carpet tile as marked on subfloor. Use nonpermanent, nonstaining marking device.
- H. Install pattern parallel to walls and borders.
- I. Access Flooring: Stagger joints of carpet tiles so carpet tile grid is offset from access flooring panel grid. Do not fill seams of access flooring panels with carpet adhesive; keep seams free of adhesive.

### 3.4 CLEANING AND PROTECTION

- A. Perform the following operations immediately after installing carpet tile:
  - 1. Remove excess adhesive and other surface blemishes using cleaner recommended by carpet tile manufacturer.
  - 2. Remove yarns that protrude from carpet tile surface.
  - 3. Vacuum carpet tile using commercial machine with face-beater element.
- B. Protect installed carpet tile to comply with CRI's "Carpet Installation Standard," Section 20, "Protecting Indoor Installations."
- C. Protect carpet tile against damage from construction operations and placement of equipment and fixtures during the remainder of construction period. Use protection methods indicated or recommended in writing by carpet tile manufacturer.

END OF SECTION 096813



NOTE: FASHON AND INSTALL DOWNSPOUT  
OUTLET OUTLET ACCORDING TO SMACNA 1-33

**T C A**

ARCHITECTURE + PLANNING + DESIGN

6211 ROOSEVELT WAY NE  
SEATTLE, WA 98115  
tel: (206) 522-3830

## REVISED GUTTER PROFILE

NEW FIRE STATION NO. 50

SCALE:  
3" = 1'-0"

DATE:  
03/30/22

PROJECT NO:  
17-44

REFERENCE NUMBER:

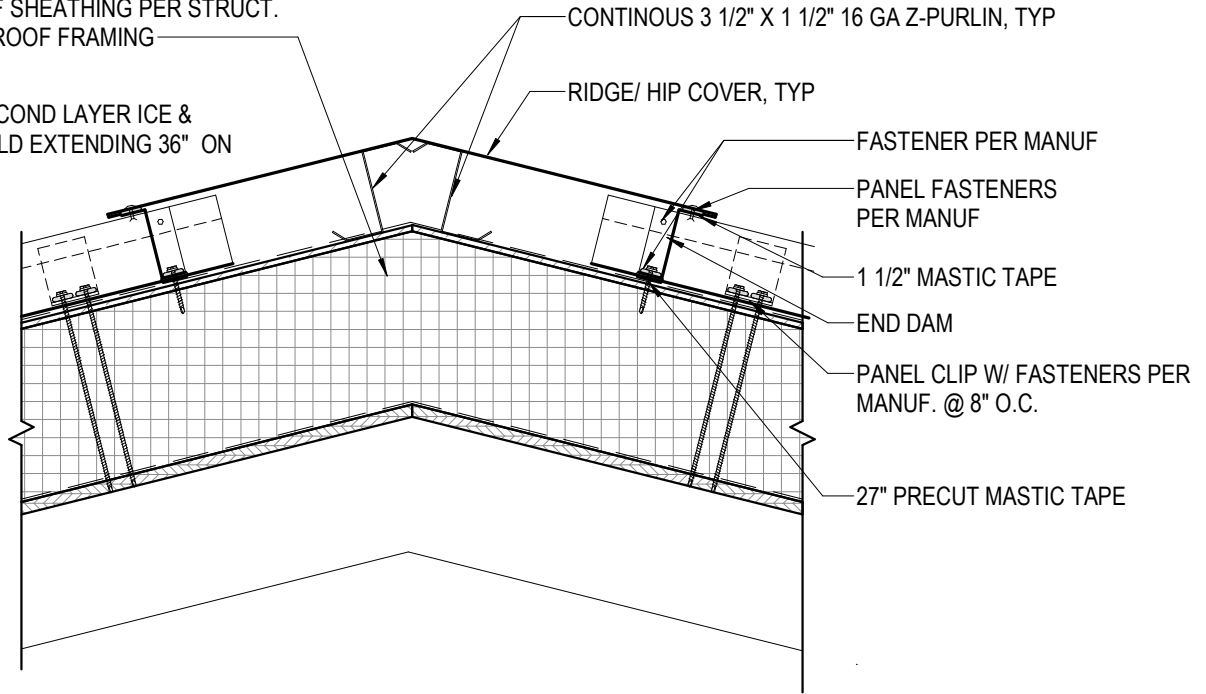
**ADD1/ ASK1**

REFERENCE SHEET:

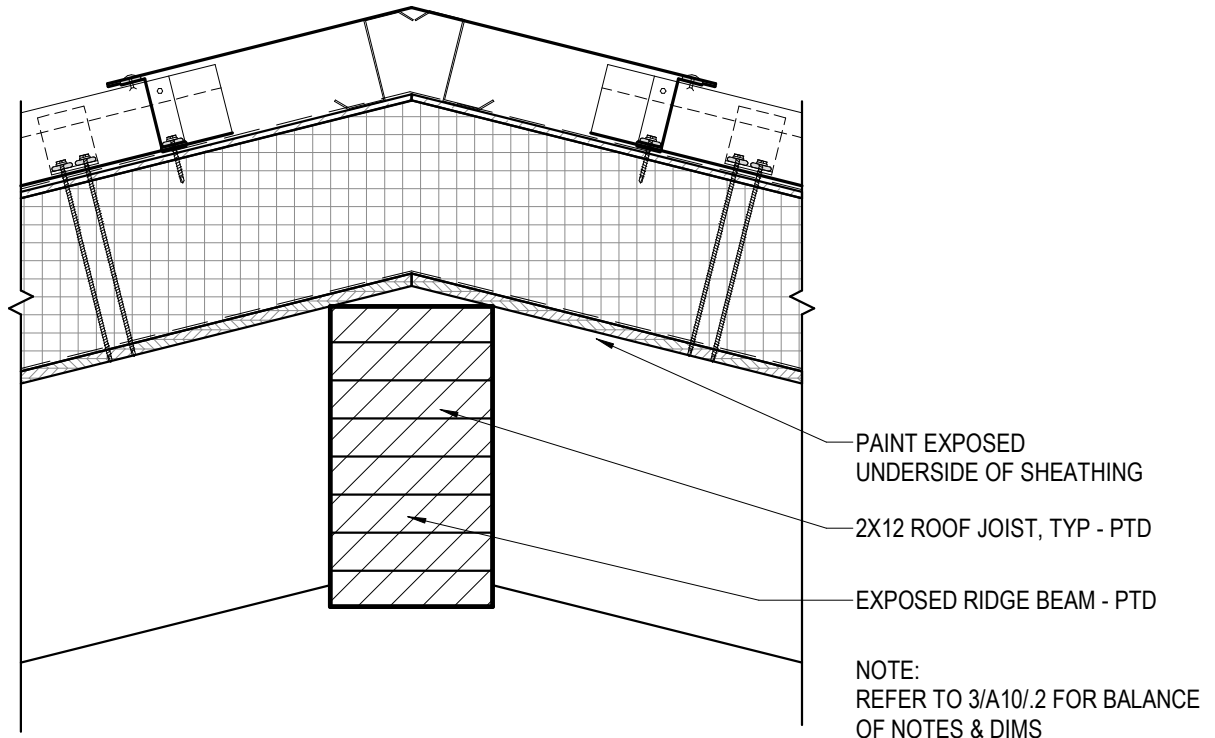
**12/A10.2**

TYP. ROOF ASSEMBLY:  
 PRE-FIN. MTL ROOF O/ ICE & WATER SHIELD  
 O/ 1/4" PROTECTION BOARD O/ 7" POLYISO  
 RIGID INSULATION (R-38 MIN) O/ VAPOR  
 BARRIER O/ ROOF SHEATHING PER STRUCT.  
 O/ STRUCTURAL ROOF FRAMING

NOTE:  
 PROVIDE SECOND LAYER ICE &  
 WATER SHIELD EXTENDING 36" ON  
 EA. SIDE



### 3/A10.2 - REVISED TYPICAL RIDGE/ HIP



### 7/A10.2 - REVISED RIDGE AT ENTRY



ARCHITECTURE + PLANNING + DESIGN  
 6211 ROOSEVELT WAY NE  
 SEATTLE, WA 98115  
 tel: (206) 522-3830

## REVISED RIDGE DETAILS

NEW FIRE STATION NO. 50

SCALE:  
 1 1/2" = 1'-0"

DATE:  
 03/30/22

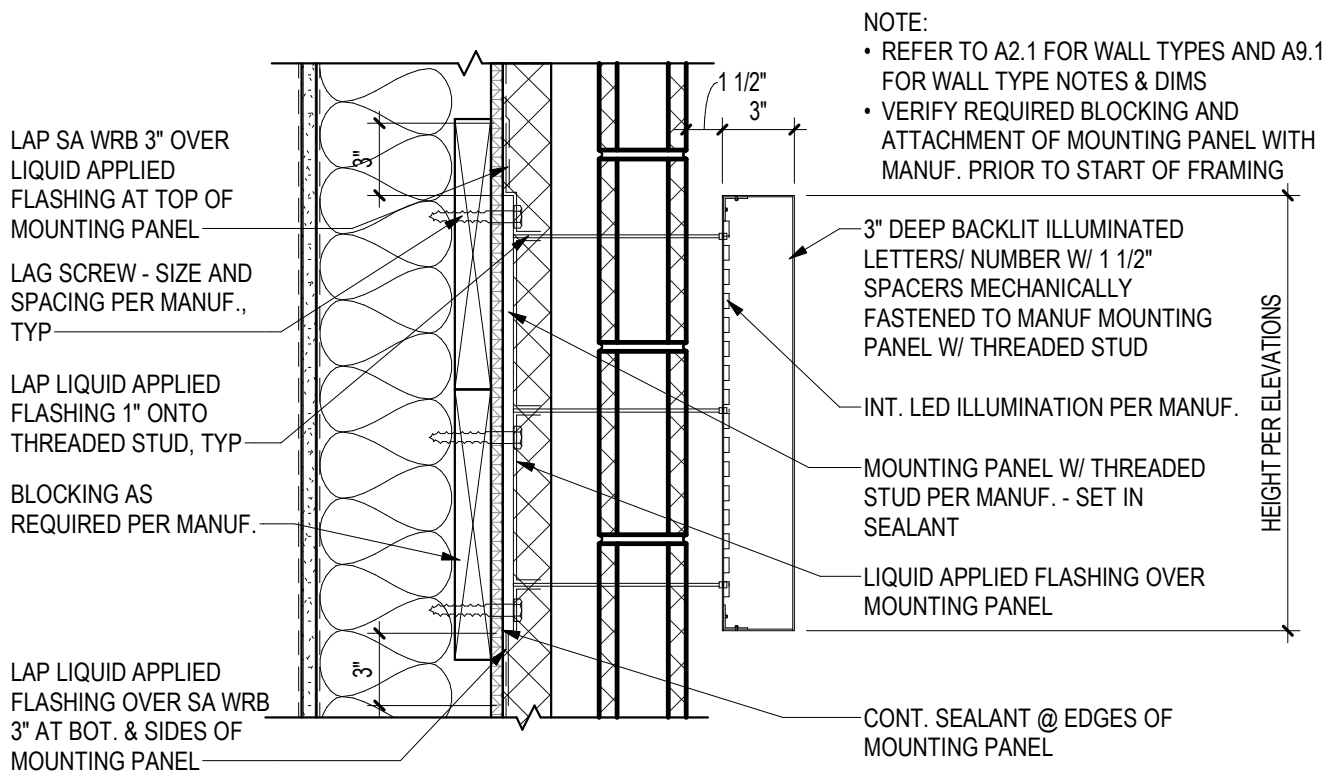
PROJECT NO:  
 17-44

REFERENCE NUMBER:

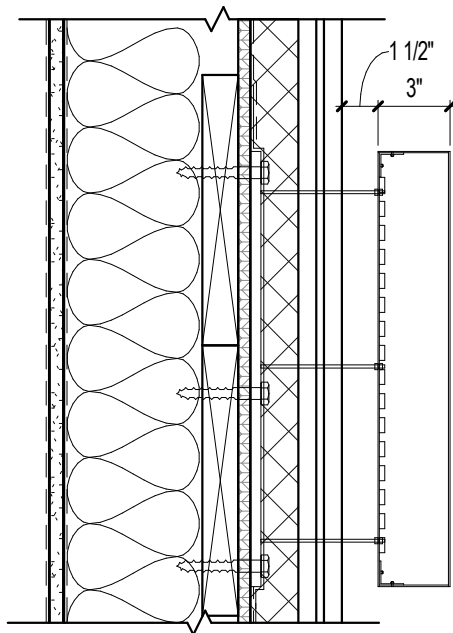
**ADD1/ ASK2**

REFERENCE SHEET:

**3 & 7/A10.2**



## 16/A10.4 - REVISED SIGNAGED ATTACHMENT AT CMU VENEER



- NOTE:**
- REFER TO A2.1 FOR WALL TYPES AND A9.1 FOR WALL TYPE NOTES & DIMS
  - REFER TO 16/A10.4 FOR BALANCE OF NOTES & DIMS

## 20/A10.4 - REVISED SIGNAGED ATTACHMENT AT SIDING

### REVISED SIGNAGE ATTACHMENT DETAILS

NEW FIRE STATION NO. 50



ARCHITECTURE + PLANNING + DESIGN  
6211 ROOSEVELT WAY NE  
SEATTLE, WA 98115  
tel: (206) 522-3830

SCALE:  
1 1/2" = 1'-0"

DATE:  
3/30/22

PROJECT NO:  
17-44

REFERENCE NUMBER:  
**ADD1/ ASK3**

REFERENCE SHEET:  
**16&20/A10.4**