



WASHINGTON DEPARTMENT OF FISH AND WILDLIFE

COULTER CREEK HATCHERY REARING POND REPAIR & BIRD PREDATION MN:H40:2021-1

SHEET INDEX

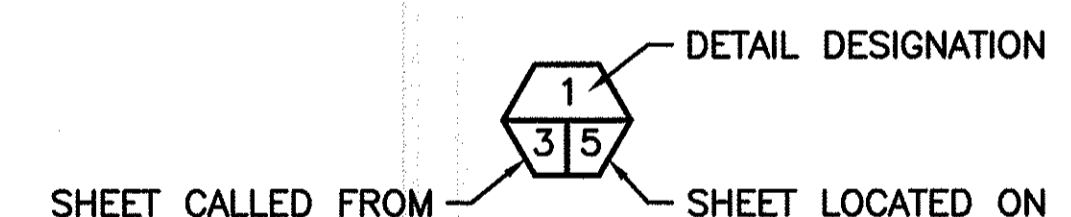
TITLE

- 1 COVER
- 2 EXISTING SITE PLAN STATE AND VICINITY MAPS
- 3 DEMOLITION AND PAVING PLAN
- 4 REARING PONDS DETAIL AND SECTIONS
- 5 BIRD PREDATION PLAN
- 6 BIRD PREDATION SECTION AND ELEVATION
- 7 BIRD PREDATION POST SECTIONS AND DETAILS

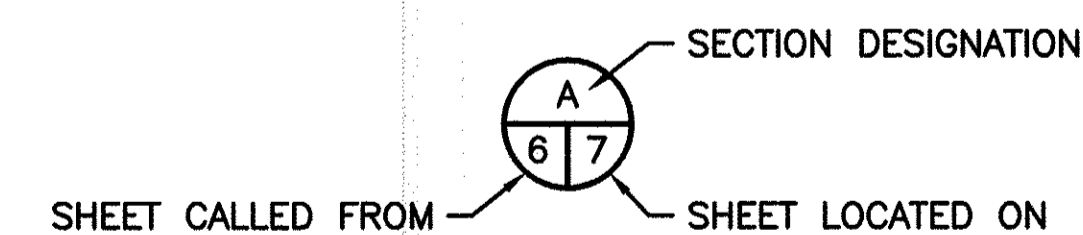
ABBREVIATIONS

ALUM	-	ALUMINUM	ID	-	INSIDE DIAMETER
L	-	ANGLE	IE	-	INVERT ELEVATION
APPROX	-	APPROXIMATELY	LBS	-	POUNDS
BM	-	BENCH MARK	LG	-	LONG
CL	-	CENTERLINE	MFG	-	MANUFACTURER'S
CMP	-	CORRUGATED METAL PIPE	MIN	-	MINIMUM
CLR	-	CLEARANCE	MISC	-	MISCELLANEOUS
CONC	-	CONCRETE	OC	-	ON CENTER
CSBC	-	CRUSHED SURFACE BASE	OD	-	OUTSIDE DIAMETER
COURSE	-		PL	-	PLATE
CSTC	-	CRUSHED SURFACE TOP	PSI	-	POUND PER SQUARE INCH
COURSE	-		RD	-	ROAD
CY	-	CUBIC YARD	REQ'D	-	REQUIRED
DIA/Ø	-	DIAMETER	SEC	-	SECTION
EL/ELEV	-	ELEVATION	SCH	-	SCHEDULE
EX/EXST	-	EXISTING	SPEC'S	-	PROJECT SPECIFICATIONS
FB	-	FLAT BAR	SS	-	STAINLESS STEEL
FTG	-	FOOTING	TYP	-	TYPICAL
GALV	-	GALVANIZED	W/	-	WITH
HMA	-	HOT MIX ASPHALT	WS	-	WATER SURFACE

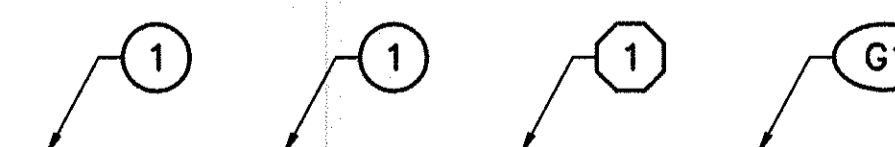
SHEET SYMBOLS



DETAIL



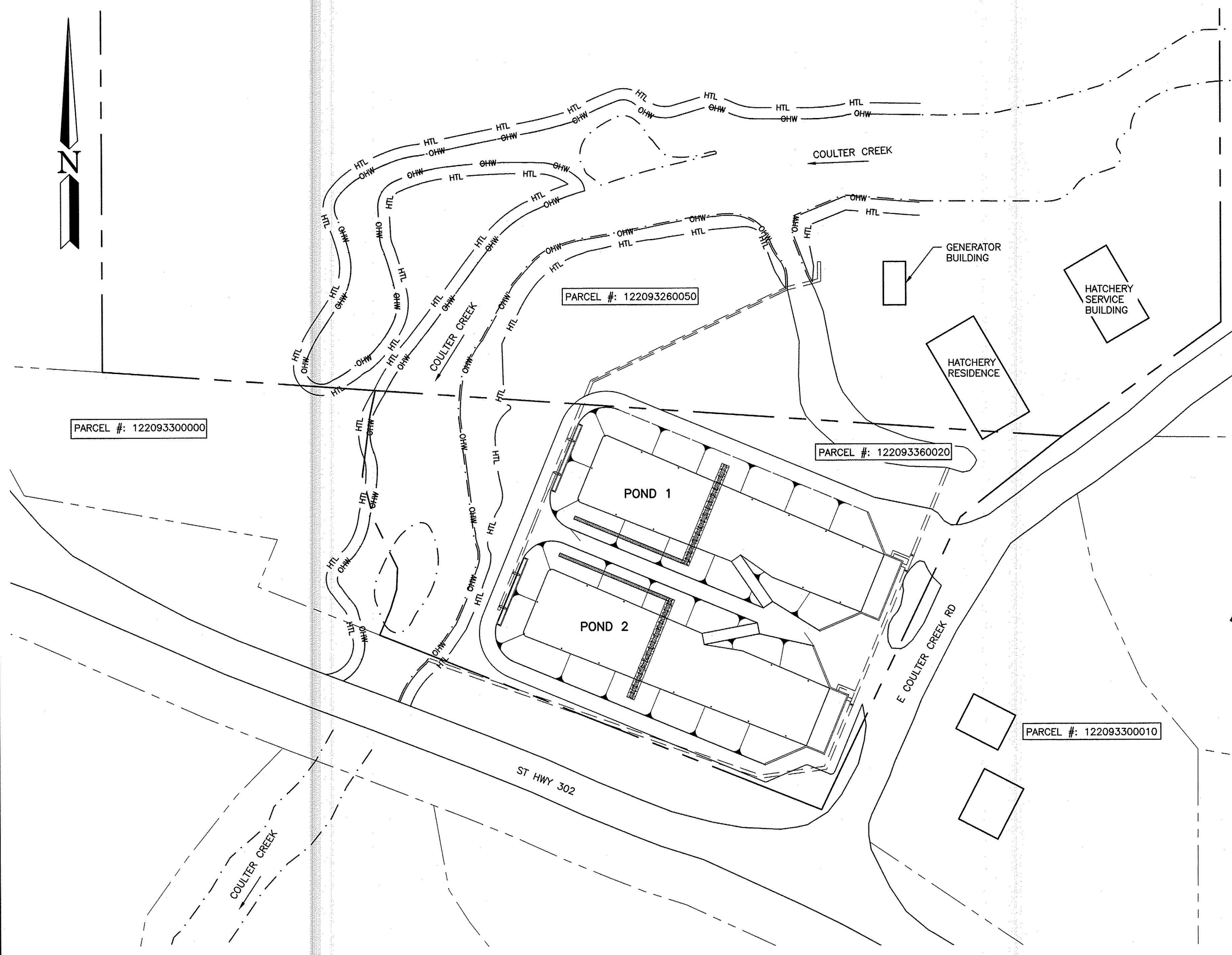
SECTION



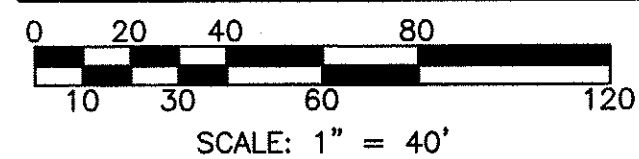
NOTE REFERENCE

REFERENCE DESIGNATION TO A
NOTE, A PART, OR MATERIAL IN A
SCHEDULE/TABLE

PROJECT NO. MN:H40:2021-1	
SHEET 1	OF 7



EXISTING SITE PLAN



LEGEND:

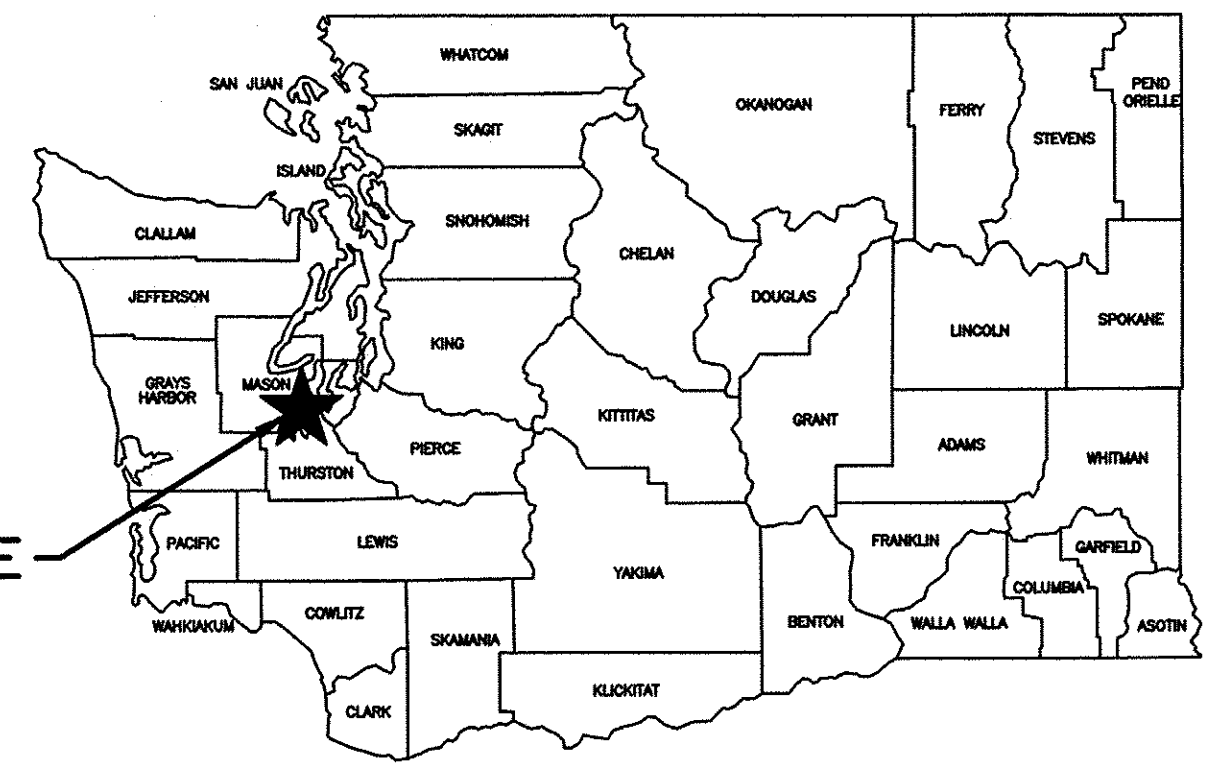
PROPERTY LINE	— PL —
WATERLINE	- - - -
ORDINARY HIGH WATER	— OHW —
HIGH TIDE LINE	— HTL —

PROPERTY INFORMATION:

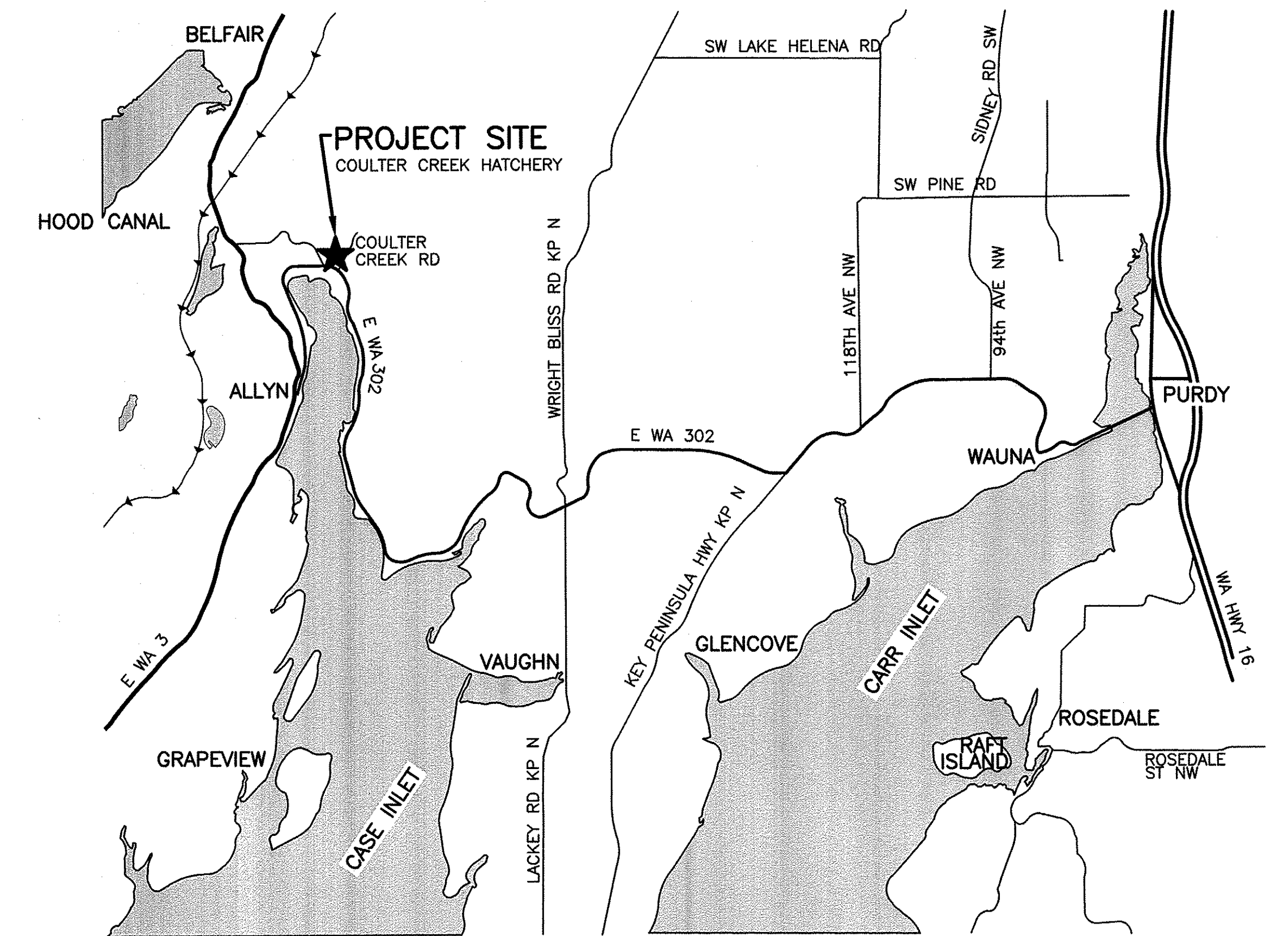
ADDRESS: 20 E COULTER CREEK RD
BELFAIR, WA 98528

COUNTY: MASON
PARCEL #: 122093360020
LAT: 47.406895
LONG: -122.818294
TOWNSHIP: 22N
RANGE: 1W
SECTION: 9

DIRECTIONS:
FROM OLYMPIA, TAKE I-5 NORTH TO EXIT 132 TO HWY 16. TAKE THE PURDY AND SHELTON EXIT TO HWY 302. GO ABOUT 15 MILES ON HWY 302 AND COULTER WILL BE ON THE RIGHT.



STATE MAP
NOT TO SCALE



VICINITY MAP
NOT TO SCALE

WASHINGTON DEPARTMENT OF
FISH & WILDLIFE



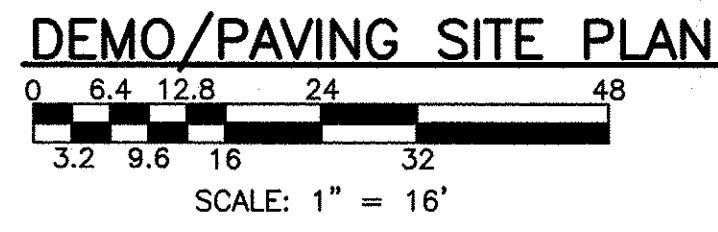
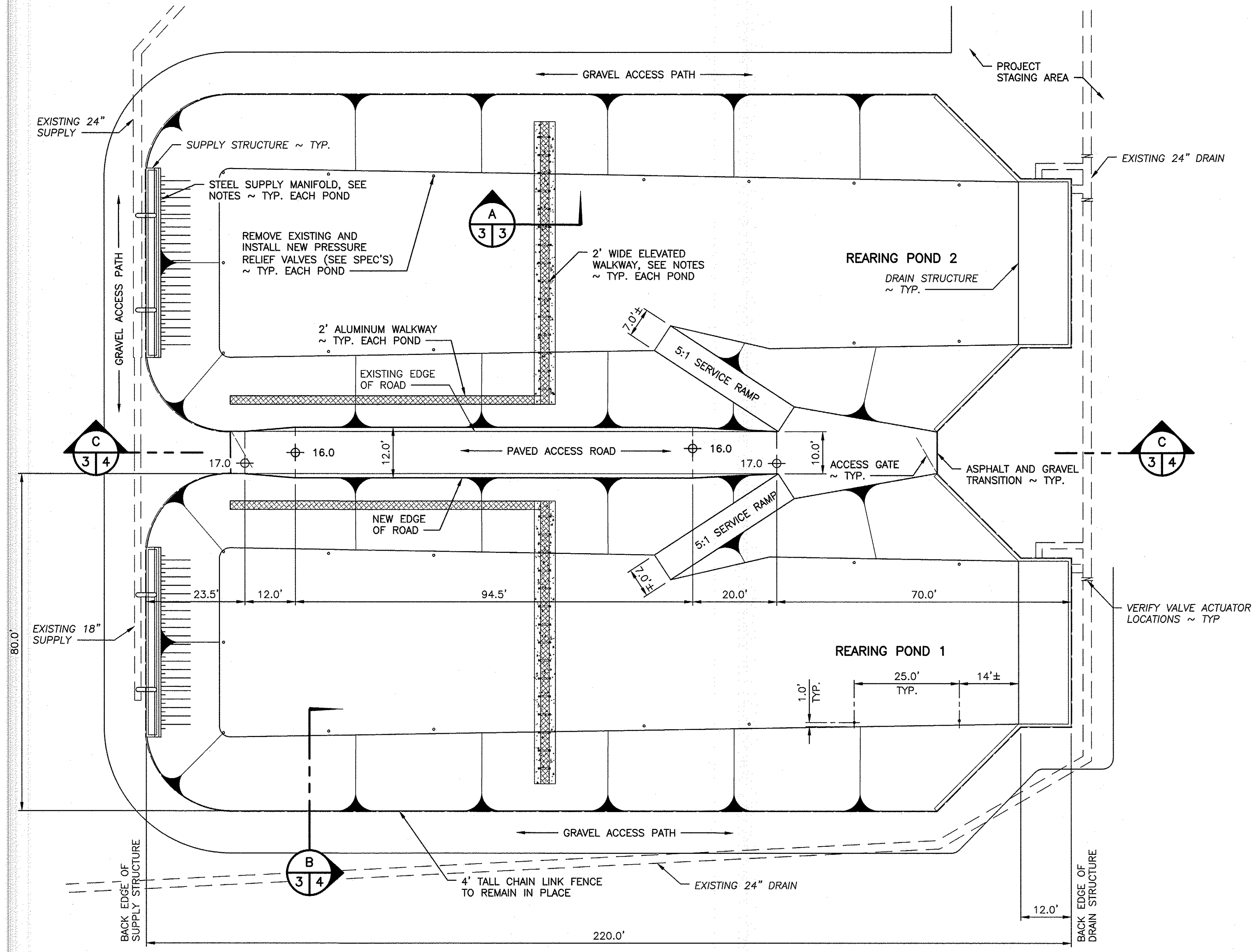
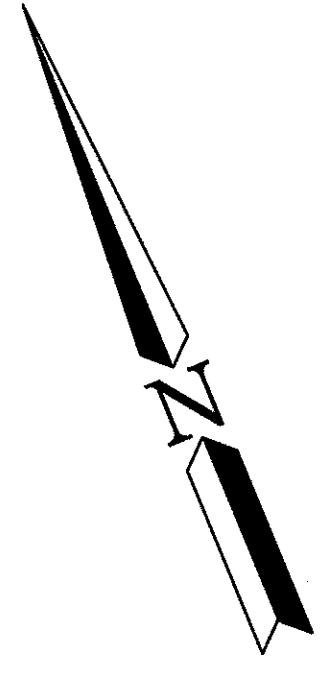
SYM	DATE	REVISION DESCRIPTION	BY
		APPROVED AND RELEASED FOR CONSTRUCTION	
CHIEF ENGINEER		<i>[Signature]</i>	DATE: 17 Jun 22
PROGRAM			DATE:

DESIGNED BY R. MOSBERGER
CHECKED BY D. SMITH
DRAWN BY C.T. & D.S.
DATE 6/17/2022

COULTER CREEK HATCHERY
REARING POND REPAIR & BIRD PREDATION
EXISTING SITE PLAN
STATE AND VICINITY MAPS

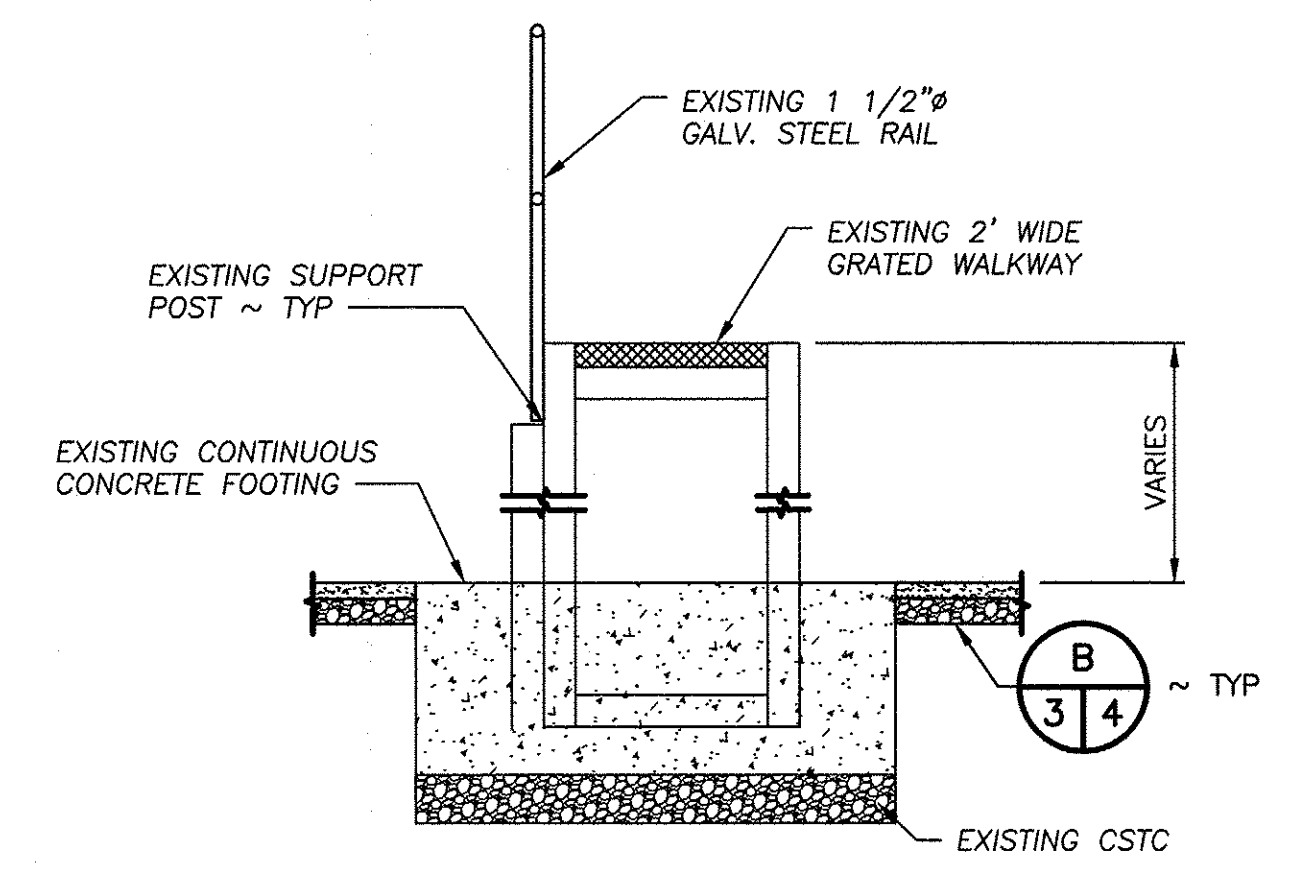
PROJECT NO.
MN:H40:2021-1

SHEET OF
2 7



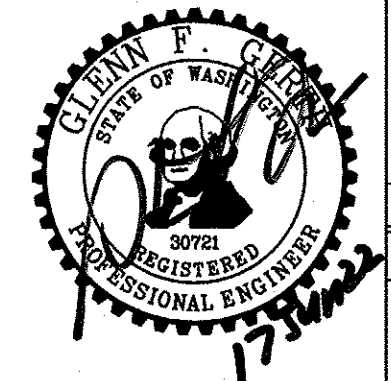
- GENERAL NOTES:**
- FIELD VERIFY ALL DIMENSIONS. REPORT CONFLICTS, TO THE PROJECT MANAGER.
 - DISPOSE OF ALL MATERIALS OFF SITE AT AN APPROVED LOCATION.
- DEMOLITION NOTES:**
- REMOVE EXISTING
- DEMOLITION LIMITS ARE INSIDE OF THE 4 FOOT PERIMETER FENCE AND BETWEEN THE GRAVEL AND ASPHALT TRANSITIONS IN THE CENTER ACCESS ROAD.
 - ASPHALT AND RELATED MATERIALS WITHIN LIMITS OF NEW HMA SURFACING AND LOWER CENTER ACCESS ROAD BETWEEN PONDS..
 - BIRD PREDATION SYSTEM. THIS INCLUDES ALL FOOTINGS, POSTS, AND NETTING.
 - SUPPLY HEADER PVC FINGERS, ALONG WITH SUPPORT SYSTEM.
- POND WORK NOTES:**
- REPLACE SUPPLY HEADER PVC FINGER AND SUPPORT SYSTEM TO MATCH REMOVED.
 - BIRD PREDATION NOT SHOWN ON THIS SHEET FOR CLARITY. SEE SHEET 5 FOR NEW BIRD PREDATION SYSTEM.
 - PORTION OF 2 FOOT WIDE ELEVATED WALKWAY AND SUPPORT POSTS TO BE REMOVED FOR EQUIPMENT ACCESS AND REINSTALLED UPON COMPLETION, TYPICAL FOR EACH POND
 - 2 FOOT ALUMINUM WALKWAY TO BE REMOVED FOR ASPHALT (HMA) REPLACEMENT AND TO BE REINSTALLED UPON COMPLETION, TYPICAL FOR EACH POND.
 - EXISTING CHAIN-LINK PERIMETER FENCE TO REMAIN

APPROX. QUANTITIES	
MATERIALS	CUBIC YARDS
EXISTING ASPHALT	APPROXIMATELY 436 CY
NEW ASPHALT (HMA)	APPROXIMATELY 436 CY
CSTC GRAVEL	APPROXIMATELY 405 CY
CENTER ACCESS ROAD	APPROXIMATELY 69 CY (CUT)
RELIEF VALVES	26



SECTION A
NOT TO SCALE

WASHINGTON DEPARTMENT OF
FISH & WILDLIFE

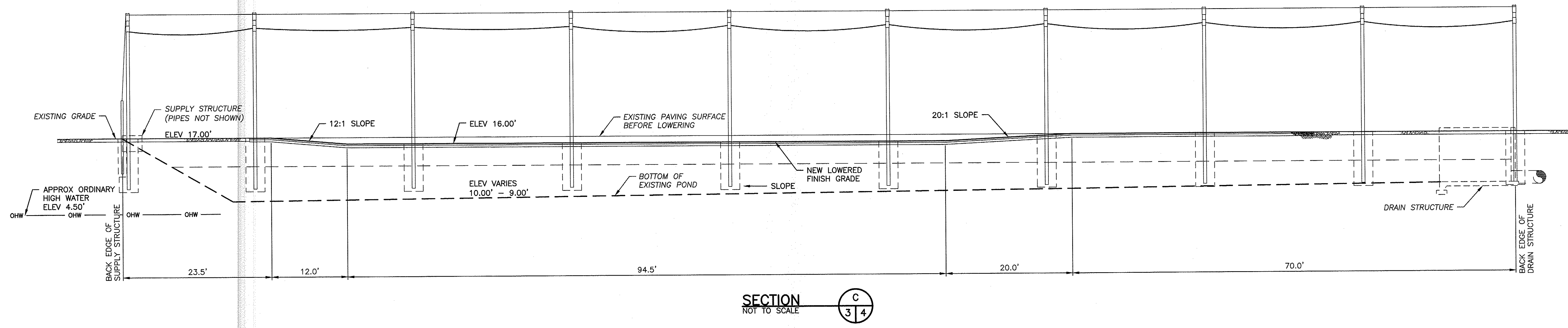
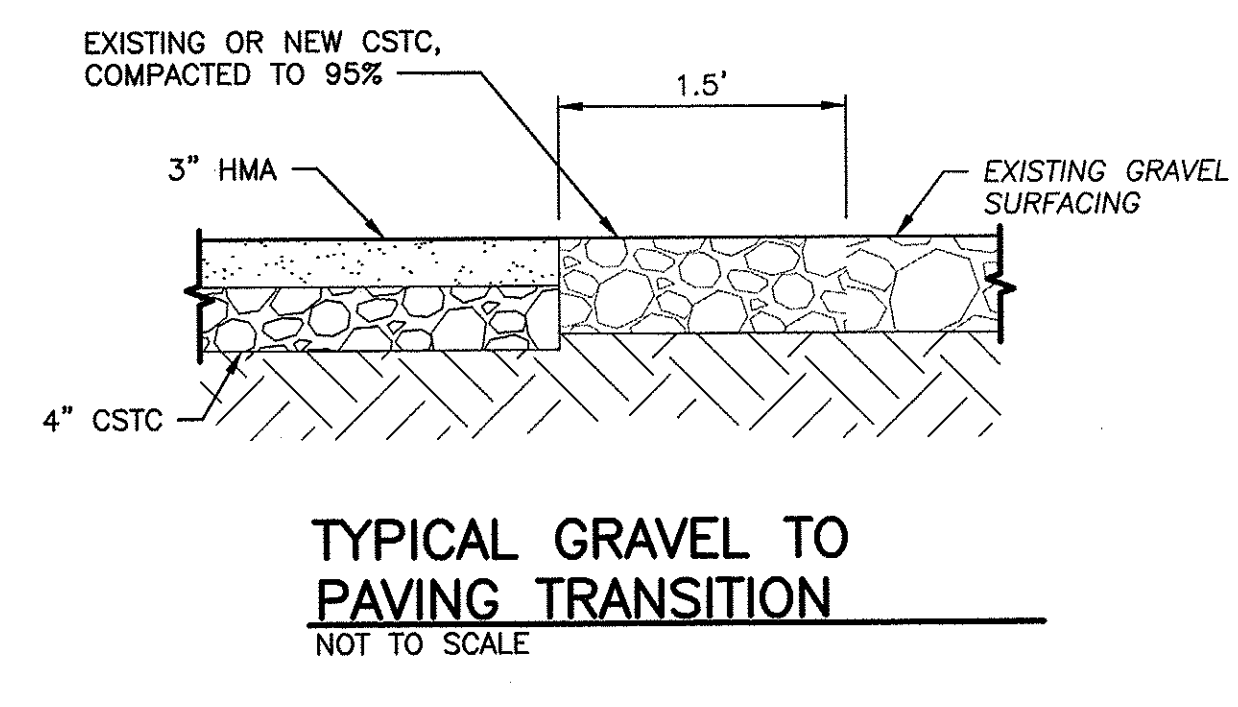
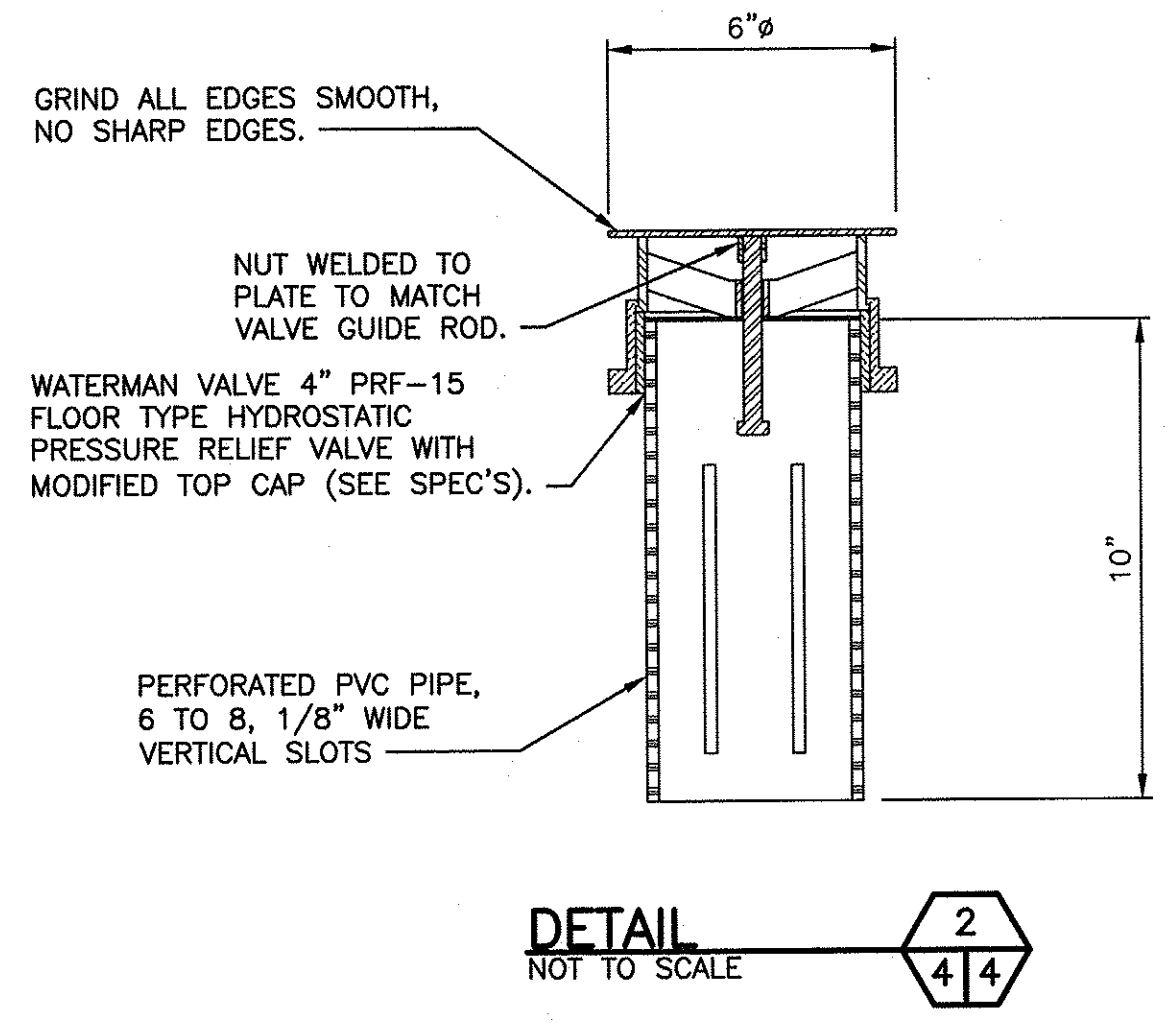
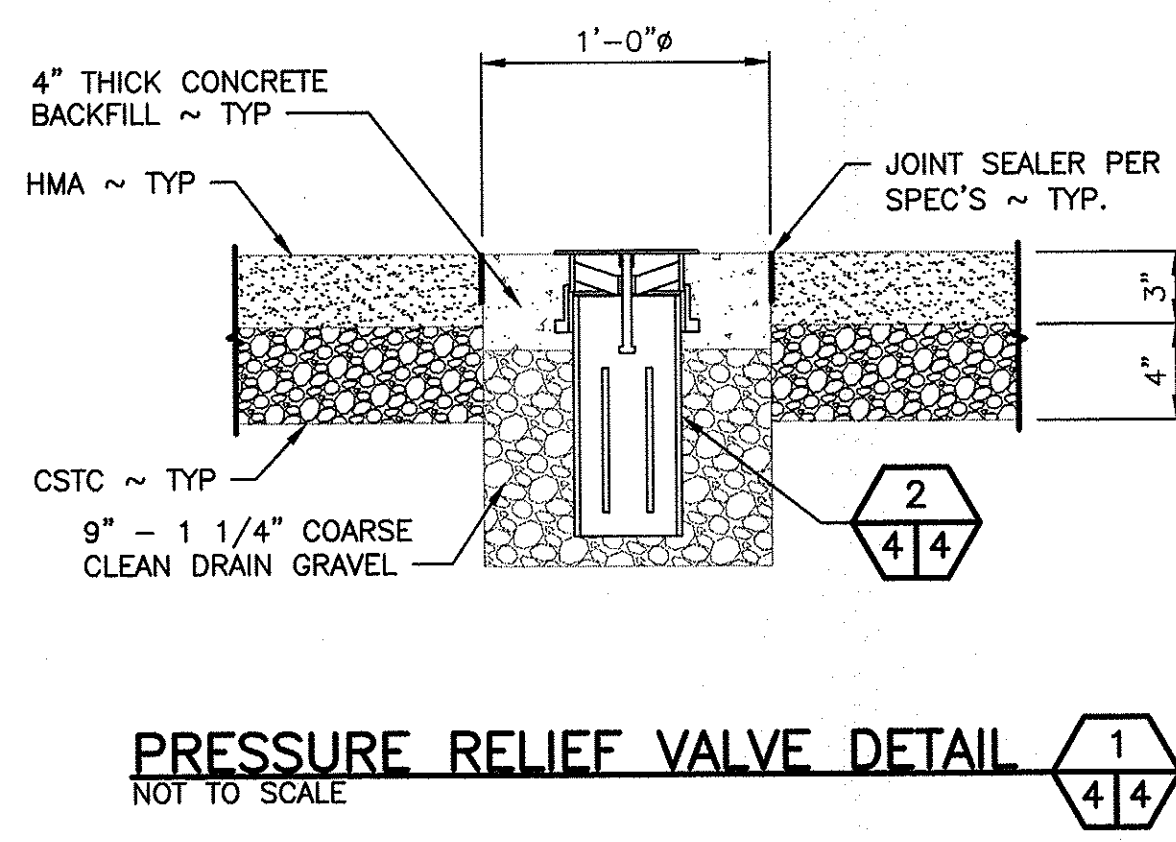
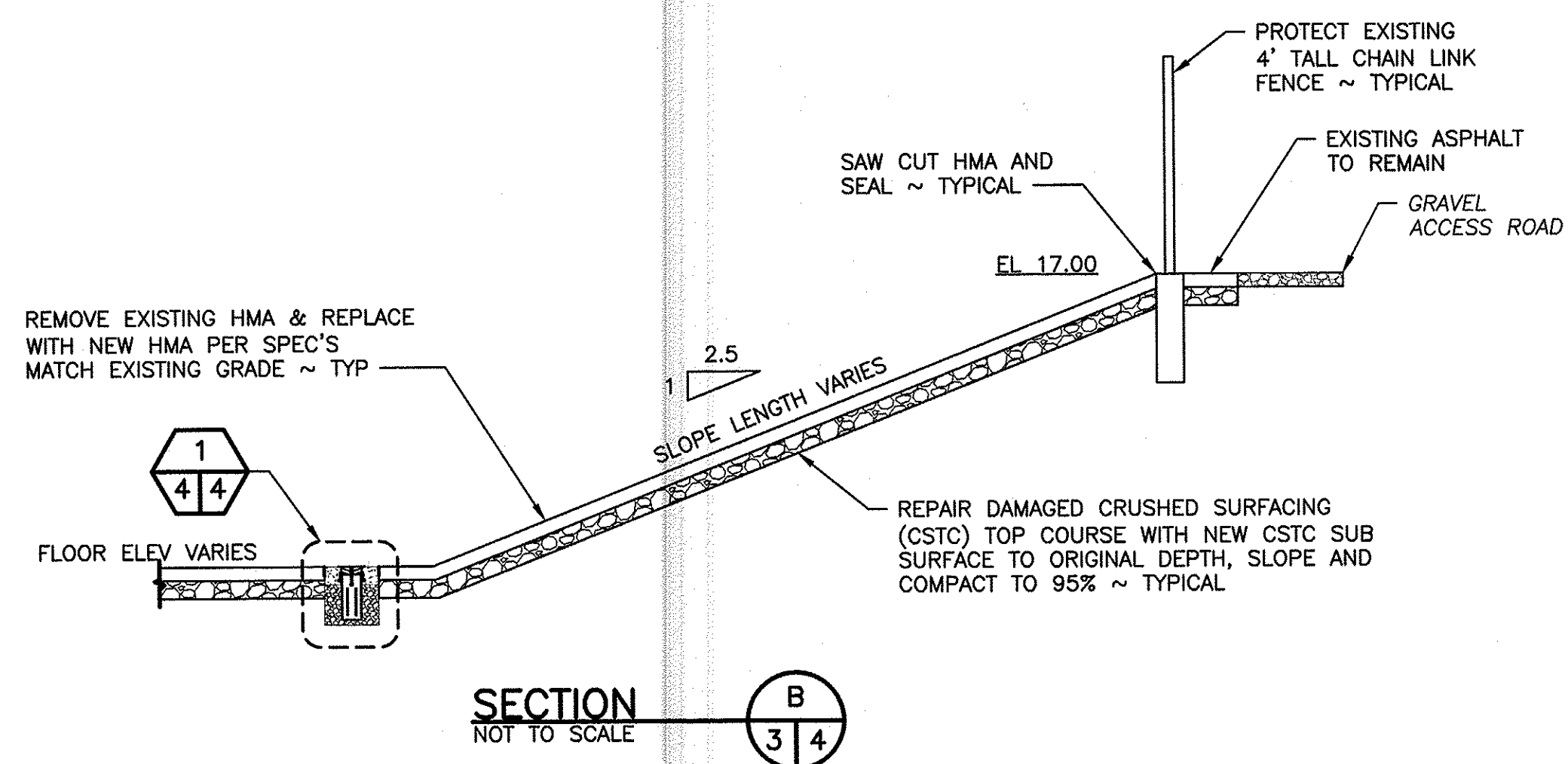


SYM	DATE	REVISION DESCRIPTION	BY
		APPROVED AND RELEASED FOR CONSTRUCTION	
CHIEF ENGINEER			DATE: 1/7/2022
PROGRAM			DATE: 6/17/2022

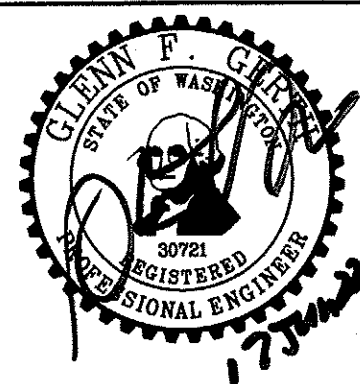
DESIGNED BY R. MOSBERGER
CHECKED BY D. SMITH
DRAWN BY C.T. & D.S.

COULTER CREEK HATCHERY
REARING POND REPAIR & BIRD PREDATION
DEMOLITION AND PAVING PLAN

PROJECT NO. MN:H40:2021-1	
SHEET 3	OF 7



WASHINGTON DEPARTMENT OF
FISH & WILDLIFE

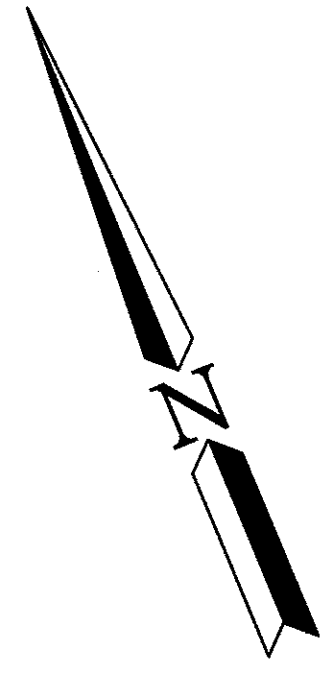


SYM	DATE	REVISION DESCRIPTION	BY
APPROVED AND RELEASED FOR CONSTRUCTION			
CHIEF ENGINEER	<i>[Signature]</i>	DATE: 1/20/22	DESIGNED BY R. MOSBERGER
PROGRAM		DATE: 6/17/2022	CHECKED BY D. SMITH
			DRAWN BY C.T. & D.S.

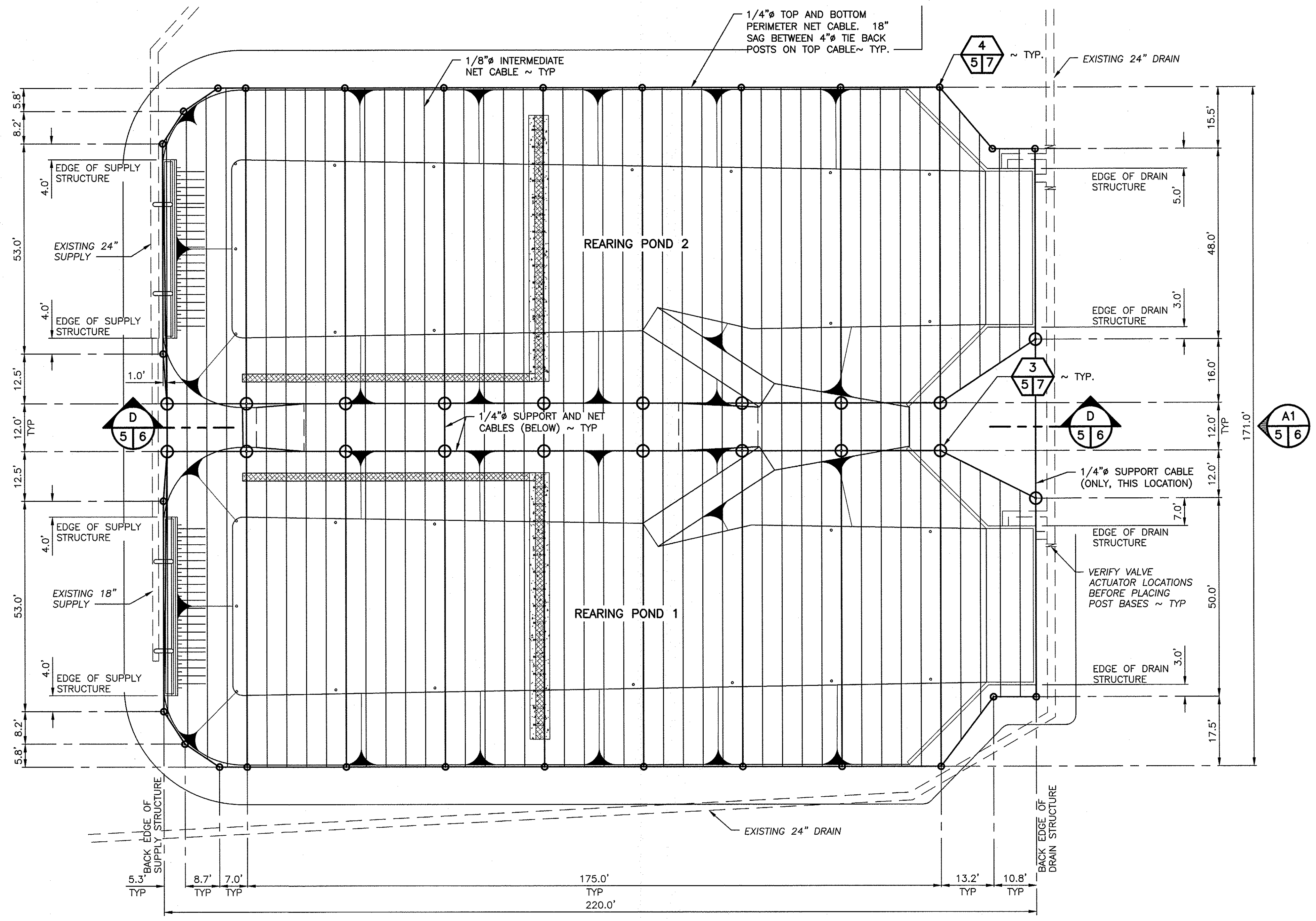
COULTER CREEK HATCHERY
REARING POND REPAIR & BIRD PREDATION
REARING PONDS DETAIL AND SECTIONS

PROJECT NO.
MN:H40:2021-1

SHEET 4 OF 7

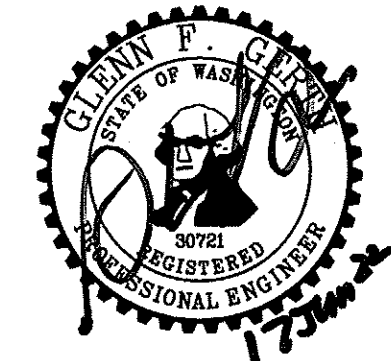


- NOTES:**
1. FIELD VERIFY ALL DIMENSIONS. REPORT CONFLICTS, TO PROJECT MANAGER.
 2. REMOVE ALL EXISTING BIRD PREDATION MATERIALS. THIS INCLUDES ALL FOOTINGS, POSTS, AND NETTING. ALL ITEMS TO BE DISPOSED OF OFF SITE AT AN APPROVED SITE.
 3. EXISTING CHAIN LINK FENCING TO REMAIN. (NOT SHOWN FOR CLARITY)



BIRD PREDATION PLAN
 0 6.4 12.8 24 48
 3.2 9.6 16 32
 SCALE: 1" = 16'

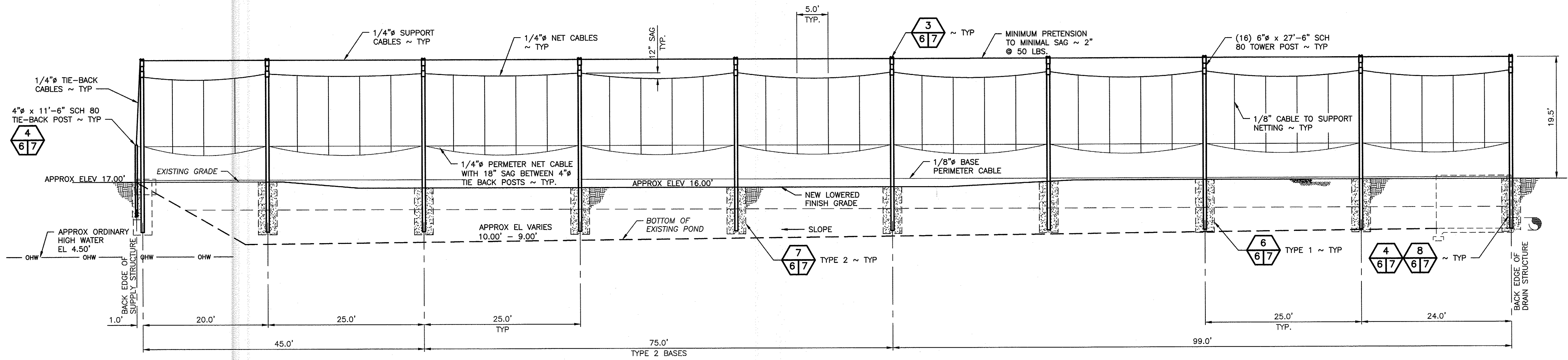
WASHINGTON DEPARTMENT OF
FISH & WILDLIFE



SYM	DATE	REVISION DESCRIPTION	BY
APPROVED AND RELEASED FOR CONSTRUCTION			
CHIEF ENGINEER	<i>[Signature]</i>	DATE: 6/17/2022	DESIGNED BY R. MOSBERGER
PROGRAM		DATE: 6/17/2022	CHECKED BY D. SMITH
			DRAWN BY C.T. & D.S.
			DATE 6/17/2022

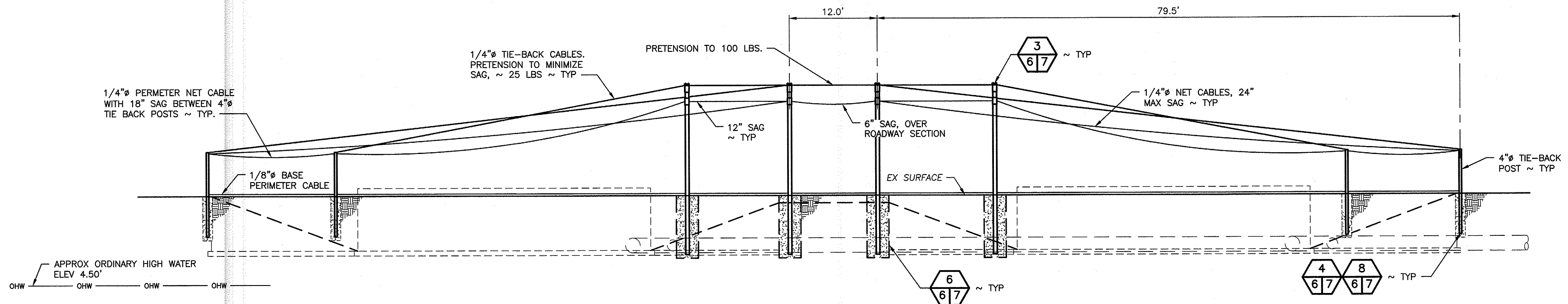
COULTER CREEK HATCHERY
REARING POND REPAIR & BIRD PREDATION
 BIRD PREDATION PLAN

PROJECT NO.
 MN:H40:2021-1
 SHEET OF
5 7



SECTION D
SCALE: 1" = 8'

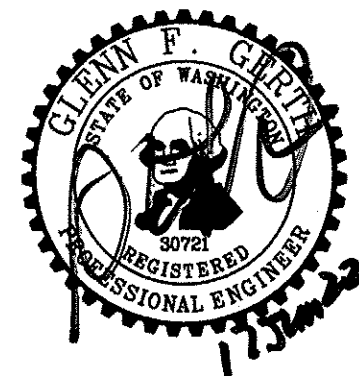
NOTE: EXISTING CHAINLINK FENCE NOT SHOWN FOR CLARITY.



ELEVATION A1
SCALE: 1" = 8'

NOTE: EXISTING CHAIN LINK FENCE AND INTERMEDIATE NET CABLES NOT SHOWN FOR CLARITY.

WASHINGTON DEPARTMENT OF
FISH & WILDLIFE

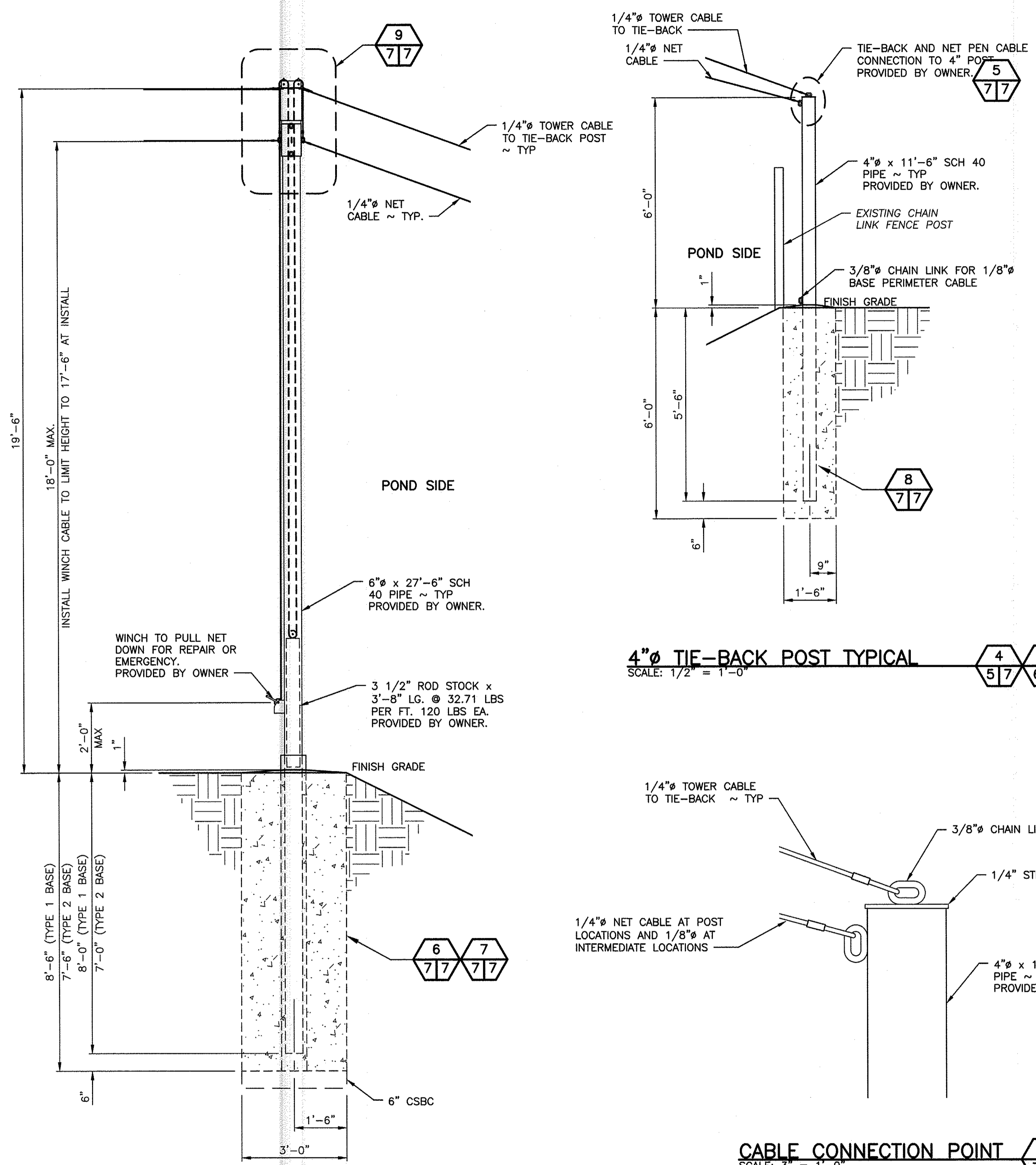


SYM	DATE	REVISION DESCRIPTION	BY
APPROVED AND RELEASED FOR CONSTRUCTION			
CHIEF ENGINEER	<i>[Signature]</i>	DATE: 7/7/22	DESIGNED BY R. MOSBERGER
PROGRAM		DATE: 6/17/2022	CHECKED BY D. SMITH
			DRAWN BY C.I. & D.S.

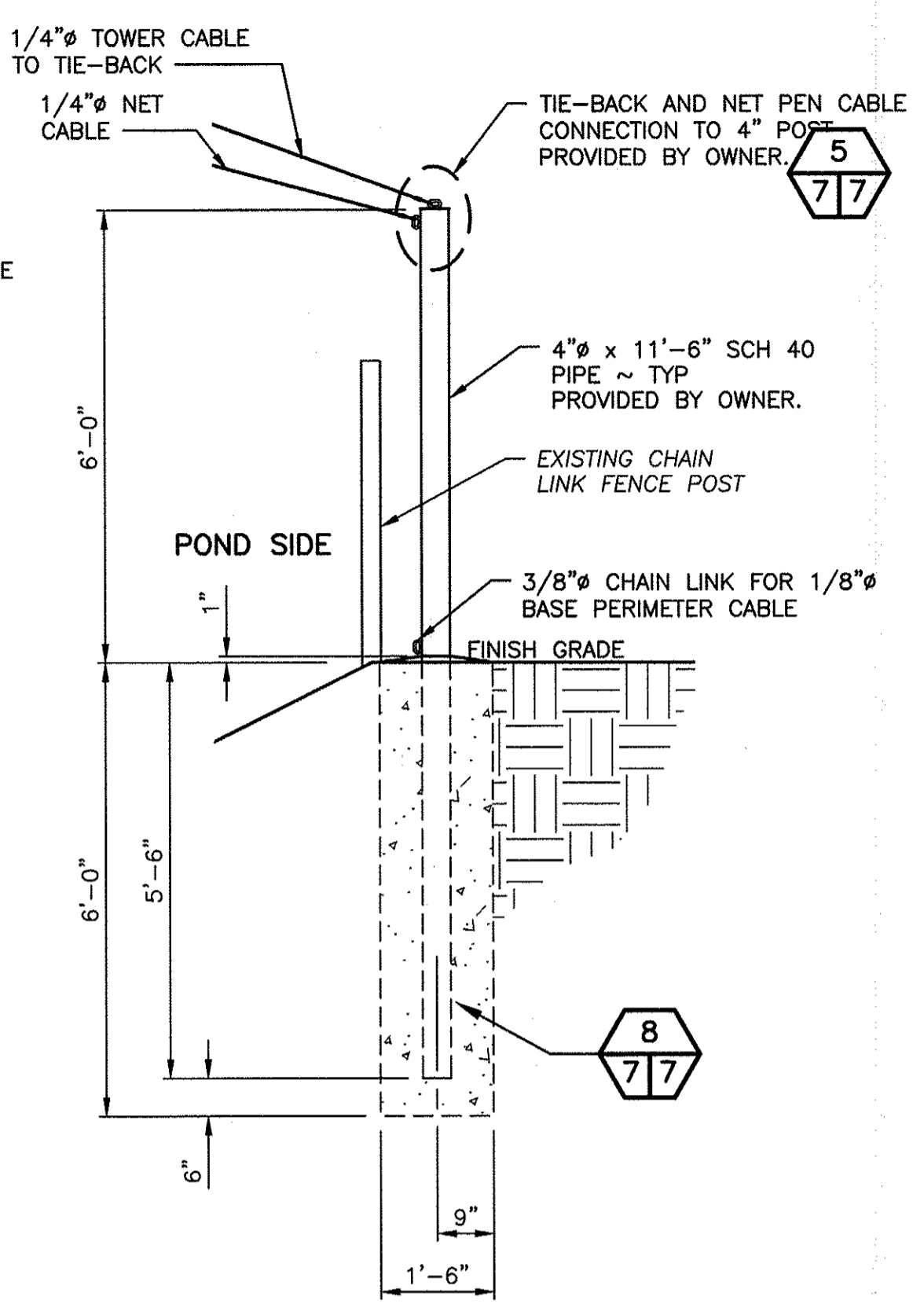
COULTER CREEK HATCHERY
REARING POND REPAIR & BIRD PREDATION
BIRD PREDATION SECTION AND ELEVATION

PROJECT NO.
MN:H40:2021-1

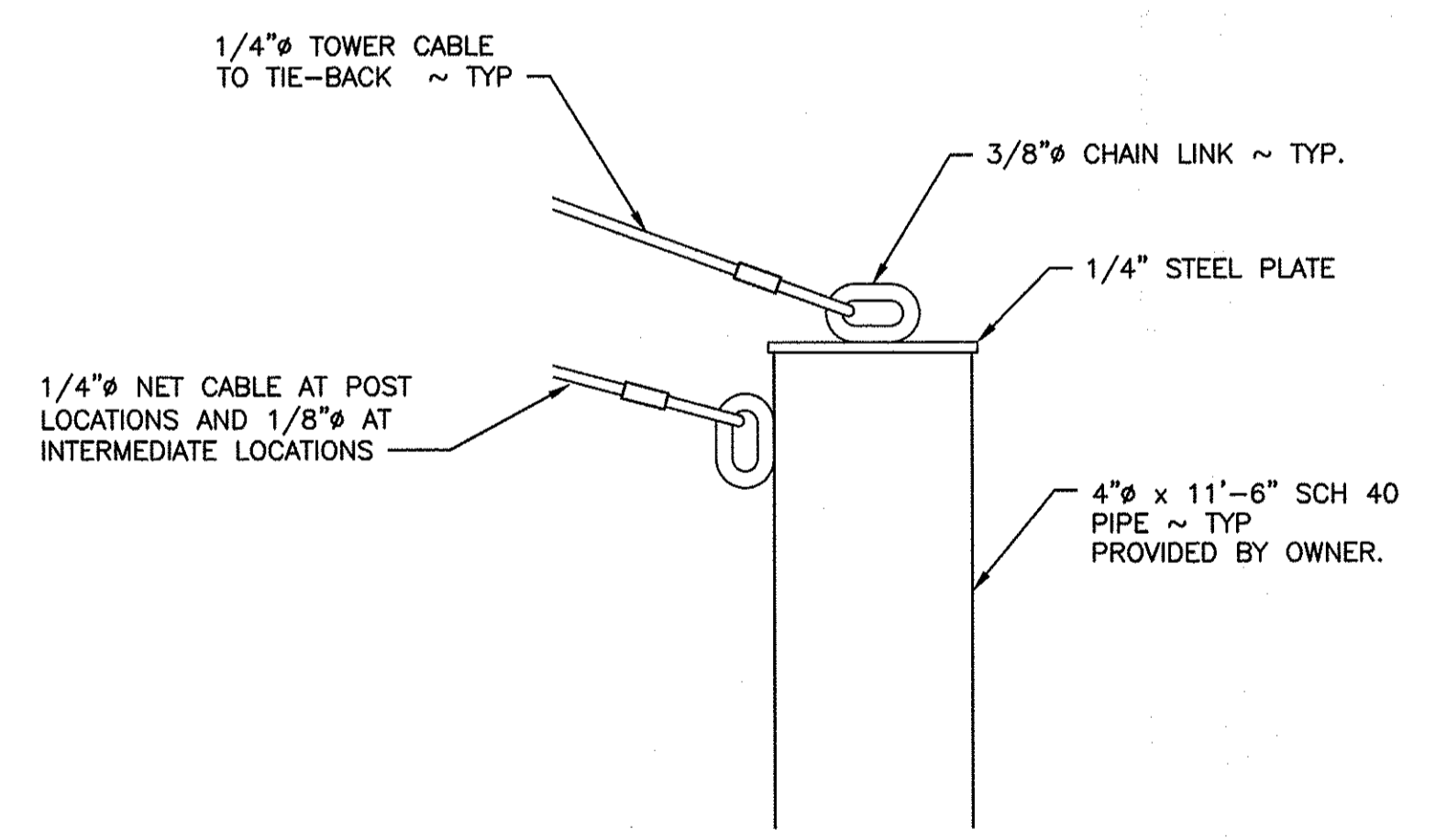
SHEET 6 OF 7



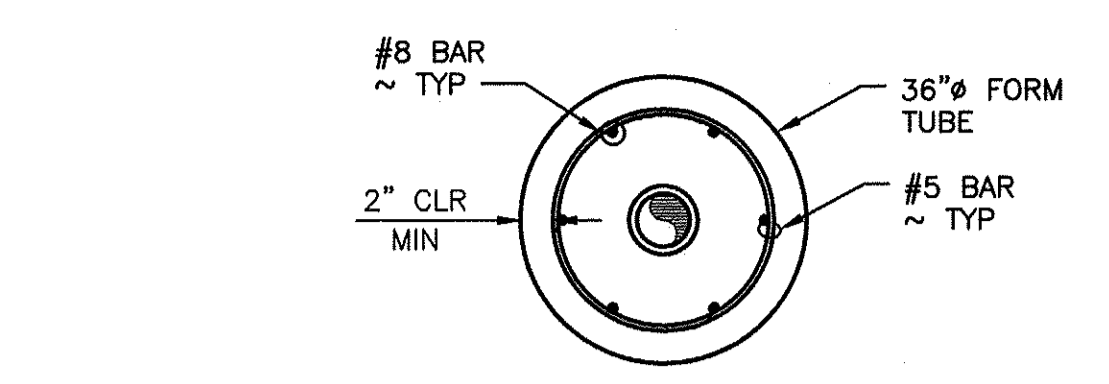
6" TOWER POST TYPICAL
SCALE: 1/2" = 1'-0"
3 3
5/7 6/7



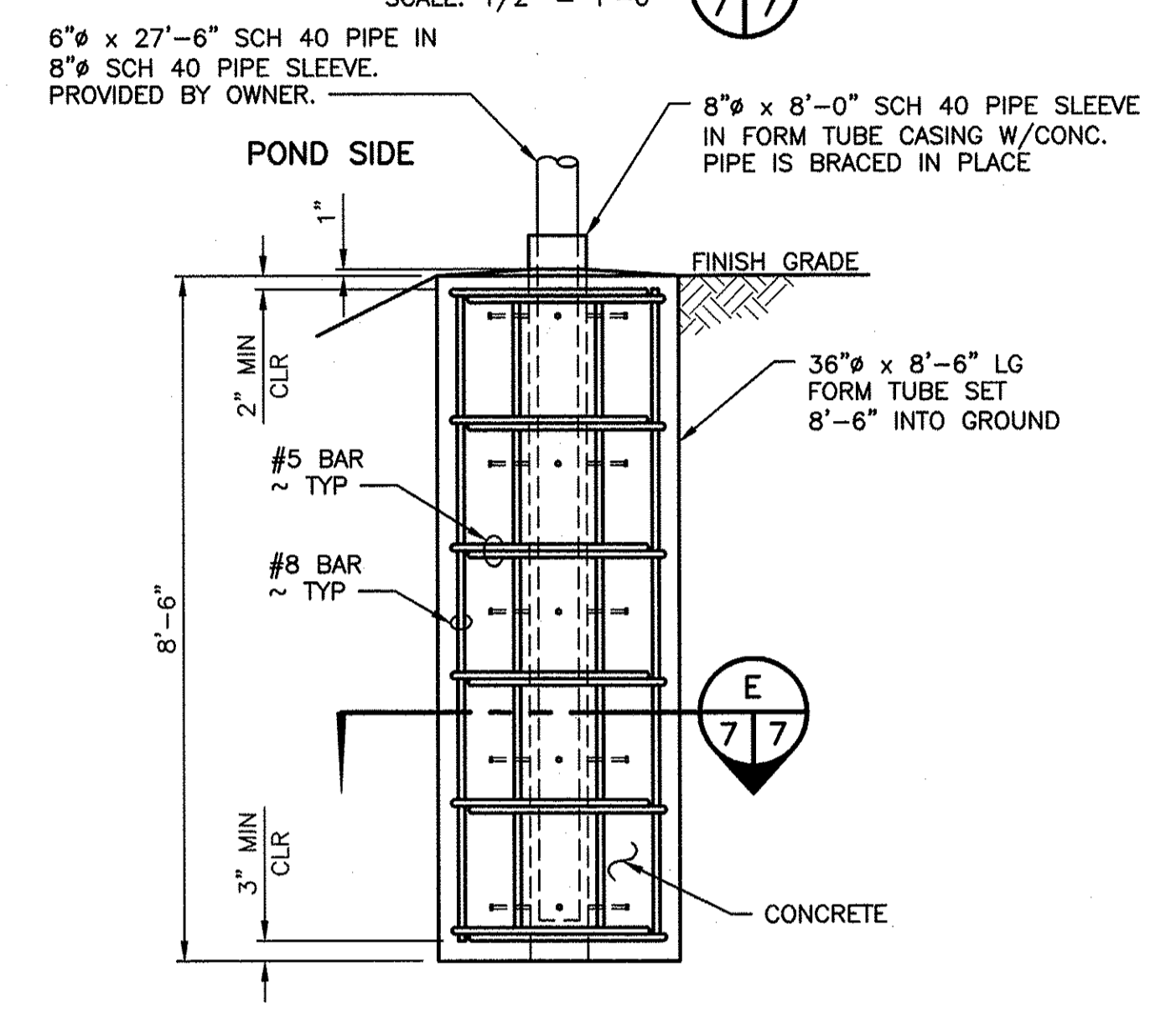
4" TIE-BACK POST TYPICAL
SCALE: 1/2" = 1'-0"
4 4
5/7 6/7



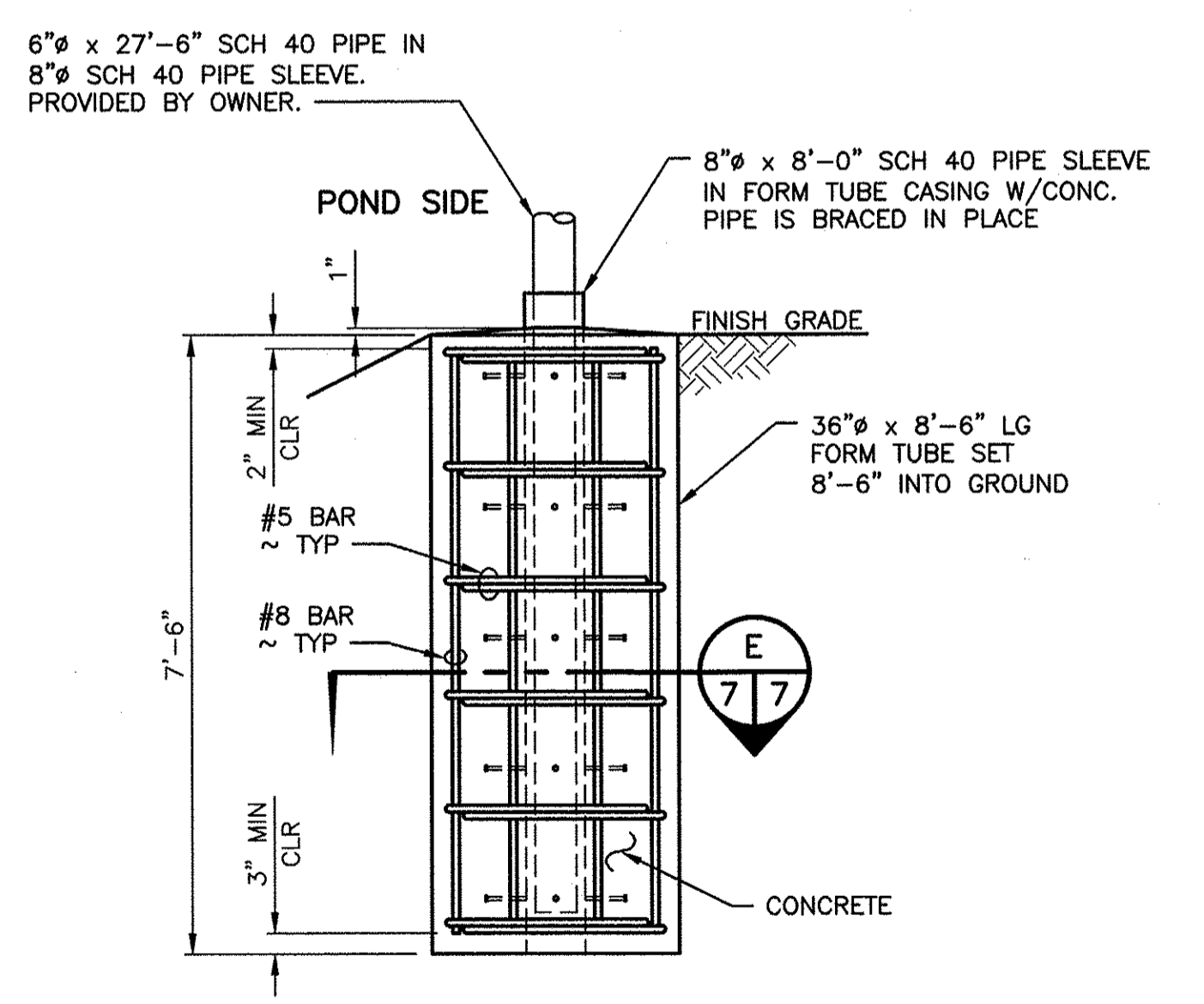
CABLE CONNECTION POINT
SCALE: 3" = 1'-0"
5
7/7



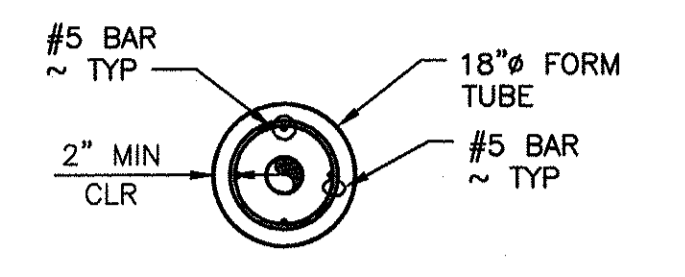
SECTION E
SCALE: 1/2" = 1'-0"
7/7



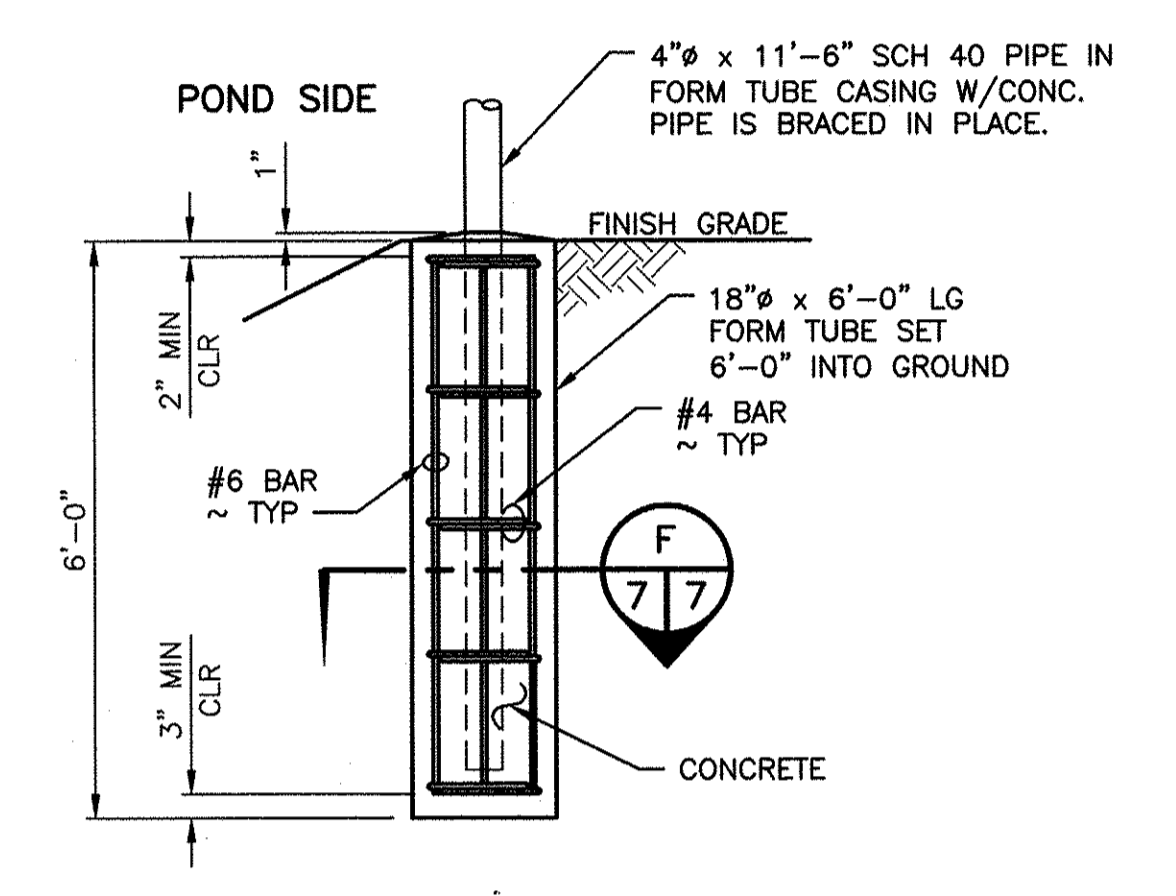
6" POST FOUNDATION TYPE 1
SCALE: 1/2" = 1'-0"
6 6
6/7 7/7



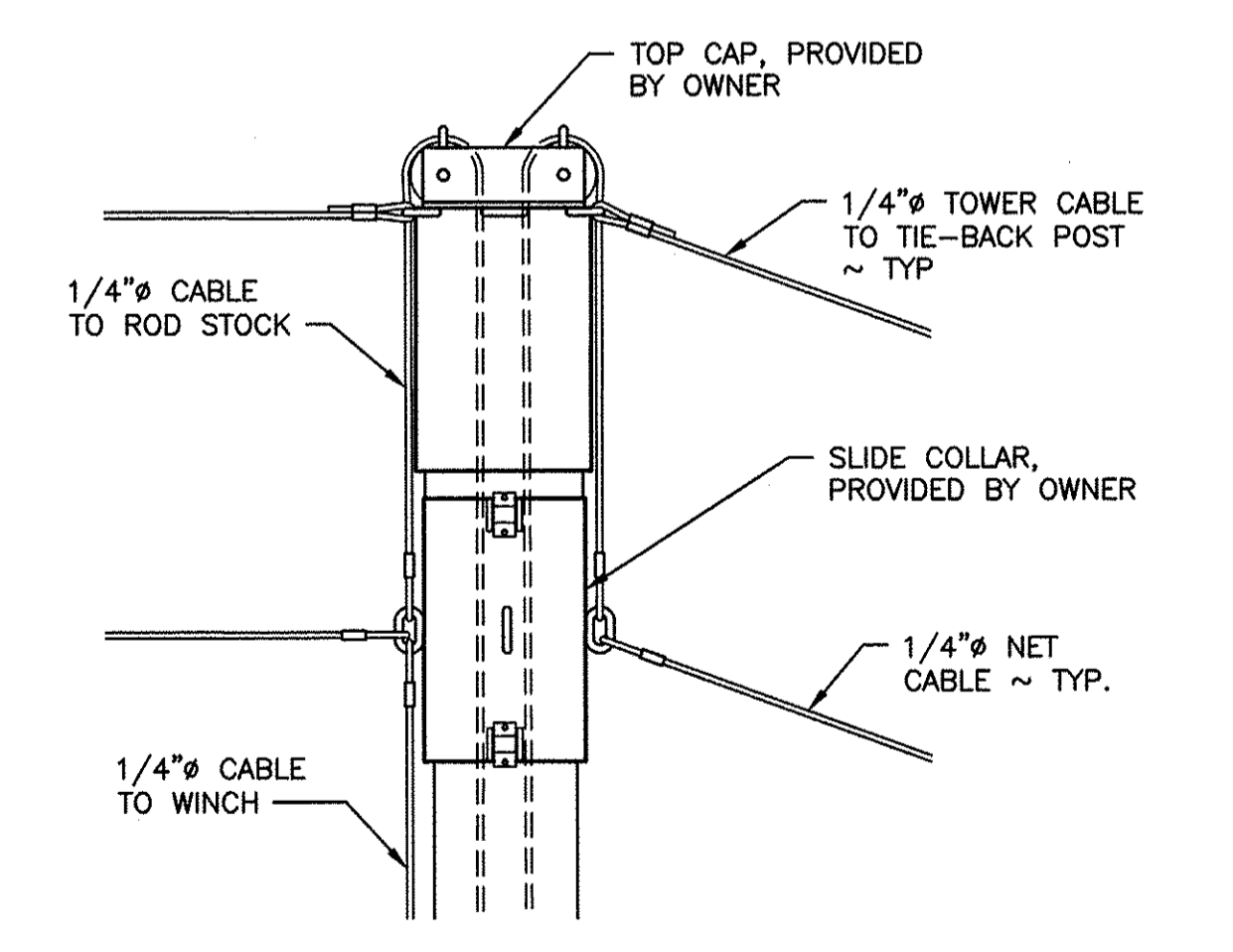
6" POST FOUNDATION TYPE 2
SCALE: 1/2" = 1'-0"
7 7
6/7 7/7



SECTION F
SCALE: 1/2" = 1'-0"
7/7



4" POST FOUNDATION
SCALE: 1/2" = 1'-0"
8 8
6/7 7/7



DETAIL 9
SCALE: 1 1/2" = 1'-0"
9
7/7

WASHINGTON DEPARTMENT OF
FISH & WILDLIFE



SYM	DATE	REVISION DESCRIPTION	BY
APPROVED AND RELEASED FOR CONSTRUCTION			
CHIEF ENGINEER	<i>DLN</i>	DATE: 7/7/22	DESIGNED BY R. MOSBERGER
PROGRAM		DATE: 6/17/2022	CHECKED BY D. SMITH
			DRAWN BY G.T. & D.S.

COULTER CREEK HATCHERY
REARING POND REPAIR & BIRD PREDATION
BIRD PREDATION POST SECTIONS AND DETAILS

PROJECT NO.
MN:H40:2021-1

SHEET OF
7 7