

From the Office of



ADDENDUM NO. 1

April 5, 2022

Holly Street Campus – Creek Bank Repairs
Issaquah School District

INDEX TO ADDENDUM CATEGORIES

Introduction
Pre-bid conference sign in sheets
Drawing Sheet Amendments
Specification Amendments

INTRODUCTION

The contract documents for the above referenced project are hereby amended as follows:

PRE-BID CONFERENCE

See attached list of Pre-Bid Conference attendees.

DRAWING SHEET AMENDMENTS

The following amendment items are identified by drawing sheet number and items description.

Sheet C200

- A. Earthwork quantities shown on this sheet are for permitting purposes only.

Sheet C300

- A. Add the following earthwork and other material quantities:

1. Large Woody Debris import, 76 logs, 8-12 cubic yards each: 920 cyds
2. Subrounded Boulders import 40 4 man rocks about 3,000 lbs/ea: 60 cyds
3. Cobble Fill import wedge with base of 7ft and height of 6 ft: 170 cyds
4. Amended Soil Bags import 4ft tall, 4-6ft wide: 140 cyds
5. Excavated Channel export which will be trees in the existing channel along with unsuitable material found in the excavations for woody debris: 340 cyds
6. Replacement Channel reuse: 70 cyds
7. Fish Mix Gravel import as needed: 120 cyds
8. Jute/Coconut netting: 340 sf

- B. Add attached sheets AR1-AR4 which show parking lot paving replacement, wheel stop, concrete paving detail, and parking lot striping.

- C. Add the following notes:

- (1) Machinery/Equipment with petroleum based products are required to be replaced with biodegradable products when working in wetlands or within 150ft of water.
- (2) Machinery/Equipment should be washed off before entering work area within the OHWM of the stream, unless Machinery/Equipment can operate from the bank edge

SPECIFICATION AMENDMENTS

Amend the following sections as indicated:

Section 001100 Advertisement for Bid

- A. This section is included twice in the bid specification. The correct version indicates that United Reprographics is located in Kent, not Seattle.

Section 002000 Instructions to bidders

- A. Add item 1.36 DOMESTIC MATERIAL PREFERENCES.
Domestic Preferences for Material Procurement – There is a preference for goods, products and materials produced in the United States, however State entities (including territorial governments) and local governments may decide not to procure such items if they are not available in a reasonable period of time, fail to meet reasonable performance standards, or are only available at an unreasonable price.

Section 013119 Project Meetings

- A. Paragraph 1.5 Items A-F replace with the following:
 - A. Erosion Control Installation, Procedures & Maintenance: Owner, Contractor, Sitework subcontractor to attend.
 - B. Pre-Construction Site meeting: Owner, FEMA, Contractor, Contractor to attend.
 - C. Pre-Stream Diversion/Coffer Dam/Fish Exclusion Protocol: Owner, Contractor, Consultants to attend.
 - D. Pre-excavation: Owner, Contractor, Consultants to attend.
 - E. Pre-Helical Anchor Installation: Owner, Contractor, Consultants to attend.
 - F. Pre-Landscape installation: Owner, Contractor, Consultants to attend.

Section 321313 Concrete Paving

- A. See new specification section attached.

Section 321723 Pavement Markings

- A. See new specification section attached.

END OF ADDENDUM NO. 1

ISD HOLLY STREET CAMPUS - CREEK BANK REPAIRS PRE-BID MEETING ATTENDANCE ROSTER

Meeting: PRE-BID
Meeting Location: Site

Time: 10:00AM
Date: March 31, 2022

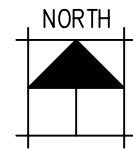
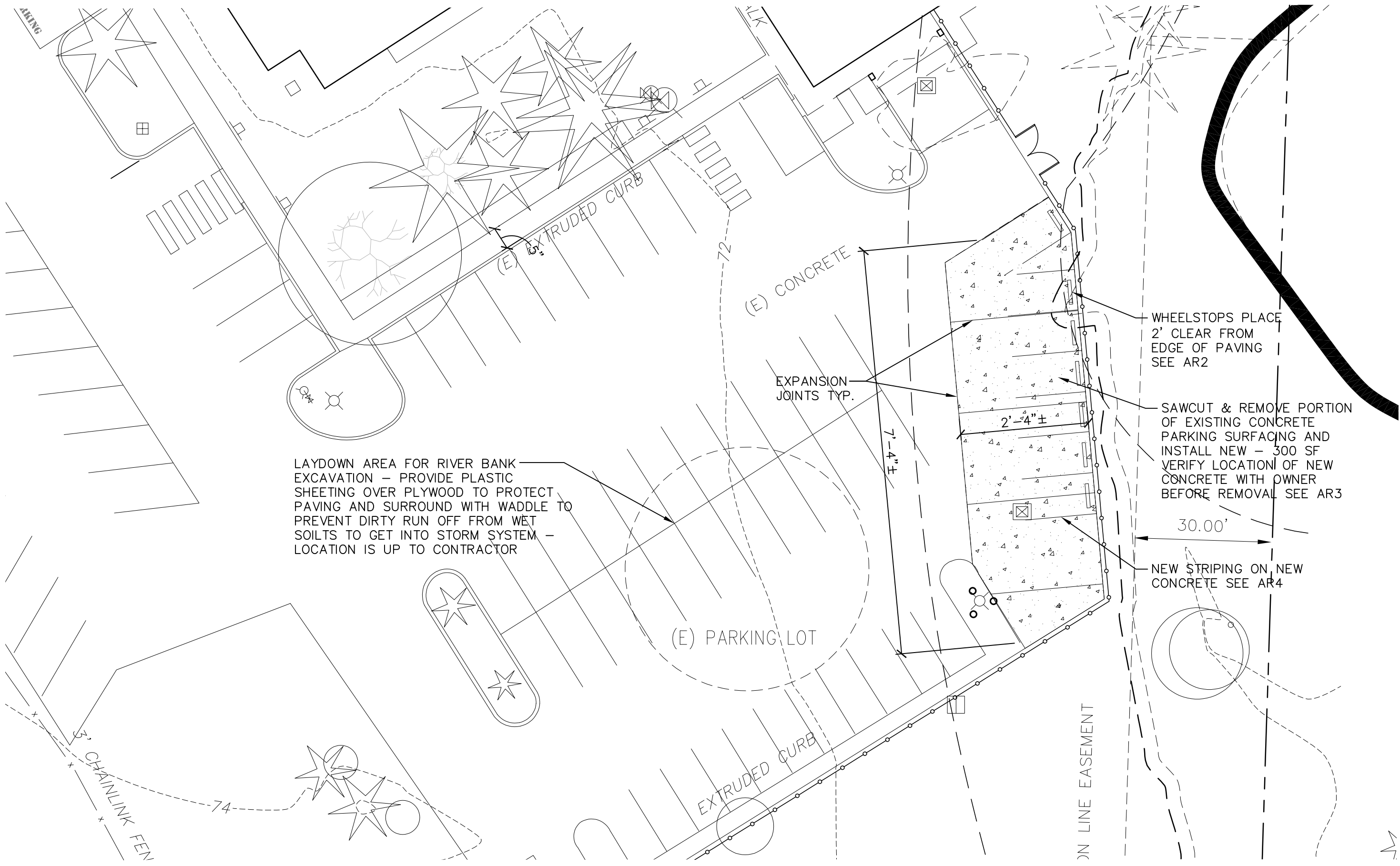
NAME	ORGANIZATION	ADDRESS	EMAIL	PHONE
Janelle Walker	Issaquah School District	5150 220 th Ave/ SE, Issaquah, WA 98029	WalkerJ2@issaquah.wednet.edu	(425) 837-7036
Steve Barnes	Cornerstone Architectural Group	6161 NE 175 th Street, Ste 101, Kenmore, WA 98028	sbarnes@cornerstonearch.com	(206) 682-5000
Carston Curd	Nelson Geotech	17311-135 th Ave NE AS50 Woodinville 98072	carston@nelsongeotech.com	(425) 523-8642
Robert Washington	Terra Dynamics	KUENEN, WA 9805 19 th Ave SE suite 106 Everett WA 98203	Robert@terradynamics.com	206-919-1129
Meryl Kamowski	Wetland Resources Inc.		meryl@wetlandresources.com	425-337-3174
Steve McChung	McChung Const Co.		Steve@mcchungconstruction.com	360-761-7688
Ali Iqbal	A.I. Landscaping and Construction	20607 SR 9 SE Snohomish, WA 98296	Bid@A1Land.com	425-902-9900
Cody Ayres	ACI	5116 River Road E Tacoma, WA	Cody@activeconstruction.com	206 724 2245

ISD HOLLY STREET CAMPUS - CREEK BANK REPAIRS PRE-BID MEETING ATTENDANCE ROSTER

Meeting: PRE-BID
 Meeting Location: Site

Time: 2:00PM
 Date: January 27, 2021

NAME	ORGANIZATION	ADDRESS	EMAIL	PHONE
Pat Carroll	OSHA	1440 Valley P. Circle	carroll@construction.com	206-877-8493
John Ellis	RODARTE	AUBURN	JOHN@RODARTECONSTRUCTION.COM	253-139-0532



PARTIAL SITE PLAN

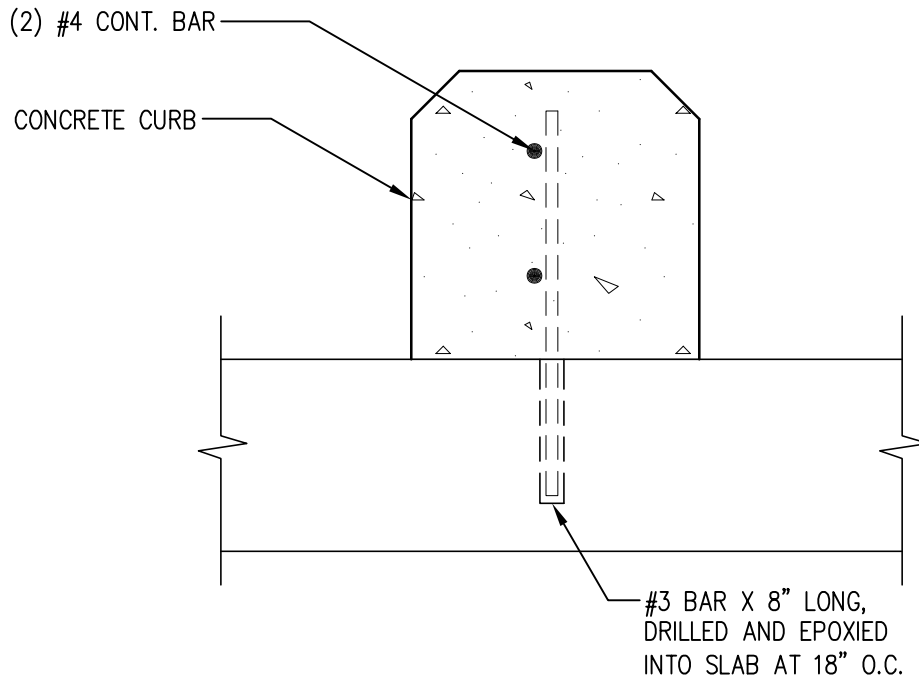
SCALE: 1" = 20'

HOLLY STREET CAMPUS - CREEK BANK REPAIR
565 NW HOLLY ST, ISSAQUAH, WA 98027

PARKING LOT ADDITIONAL WORK

DATE: 4-1-22
REVISION:

AR1



SECTION AA

2 WHEEL STOP DETAIL

SIT0209A SCALE: 3" = 1'-0"



Cornerstone
ARCHITECTURAL GROUP

6161 NE 175th Street, Suite 101
Kenmore, Washington 98028

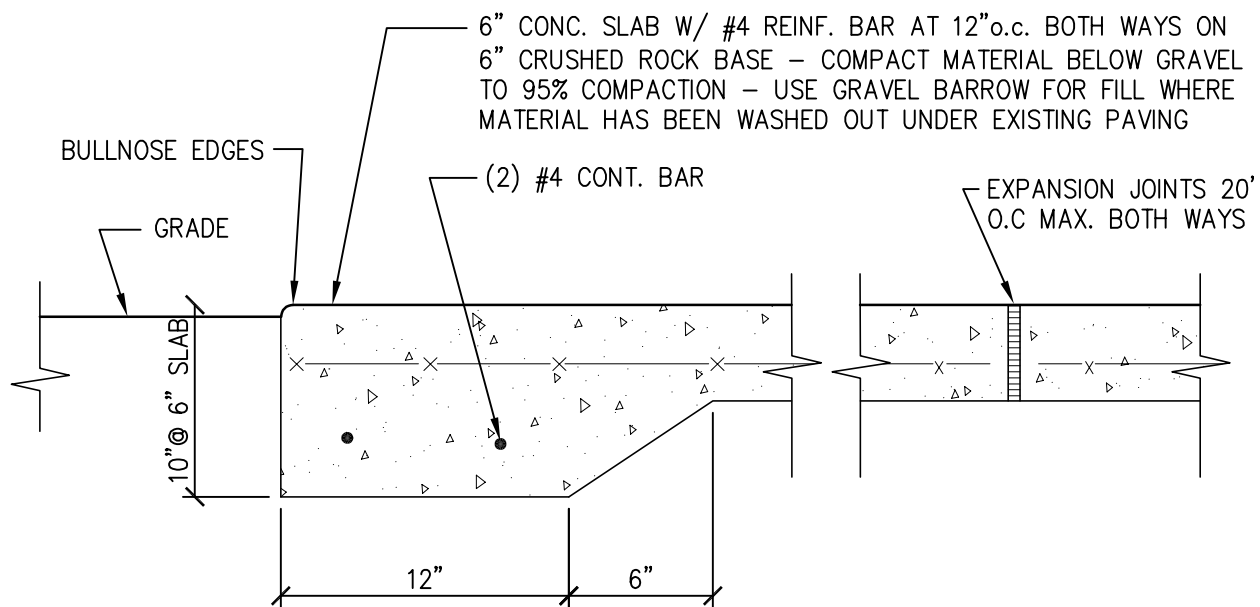
Phone: 206.882.5000
cornerstonearch.com

HOLLY STREET CAMPUS - CREEK BANK REPAIR
565 NW HOLLY ST, ISSAQUAH, WA 98027

WHEEL STOP

DATE: 4-1-22
REVISION:

AR2



DOWEL NEW CONCRETE PAVEMENT TO EXISTING

1 CONCRETE PAVING

SIT0710A SCALE: 1 1/2" = 1'-0"



Cornerstone
ARCHITECTURAL GROUP

6161 NE 175th Street, Suite 101
Kenmore, Washington 98028

Phone: 206.682.5000
cornerstonearch.com

HOLLY STREET CAMPUS - CREEK BANK REPAIR

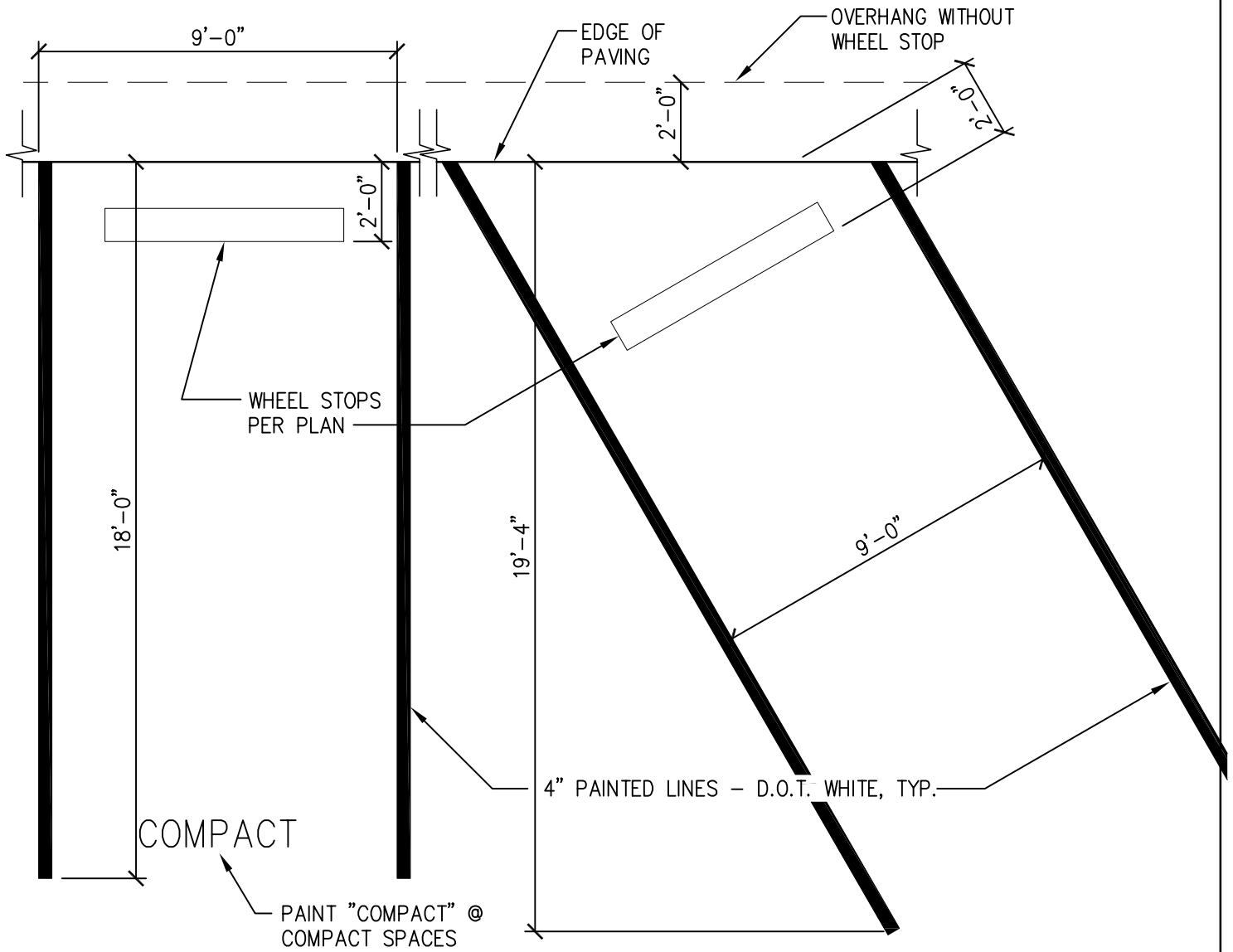
565 NW HOLLY ST, ISSAQUAH, WA 98027

CONCRETE PAVING

DATE: 4-1-22

REVISION:

AR3



3 PAINTED PARKING STRIPE

SIT0809F

SCALE: 1/4" = 1'-0"



Cornerstone
ARCHITECTURAL GROUP

6161 NE 175th Street, Suite 101
Kenmore, Washington 98028

Phone: 206.682.5000
cornerstonearch.com

HOLLY STREET CAMPUS - CREEK BANK REPAIR

565 NW HOLLY ST, ISSAQUAH, WA 98027

PAVEMENT PARKING STRIPING

DATE: 4-1-22

REVISION:

AR4

CONCRETE PAVING

PART 1 - GENERAL

1.1 SUMMARY

Provisions of the Bidding Requirements, Conditions of the Contract, and Division 1 apply to all Sections of this Project Manual. Refer to Table of Contents for complete list of Bidding Requirements, Conditions, and Sections included in the Project Manual.

- A. Work Included in This Section: Provide concrete sidewalks, and wheel stops as indicated on the drawings and specified herein.
- B. Related Work in Other Sections: Refer to the following sections for related work: 01230 for alternates which may affect this work.

31 20 00 for Earthwork.

32 17 00 for Pavement Markings

1.2 REFERENCES

- A. ACI 301 - Specifications for Structural Concrete for Buildings.
- B. ACI 304 - Recommended Practice for Measuring, Mixing, Transporting and Placing Concrete.
- C. ACI 305 - Hot weather Concreting.
- D. ACI 306 - Cold Weather Concreting.
- E. ANSI/ASTM D1751 - Preformed Expansion Joint Fillers for Concrete Paving and Structural Construction.
- F. ASTM A615 - Deformed and Plain Billet-Steel for Concrete Reinforcement.
- G. ASTM C33 - Concrete Aggregates.
- H. ASTM C94 - Ready Mix Concrete.
- I. ASTM C150 - Portland Cement.
- J. ASTM C260 - Air-Entraining Admixtures for Concrete.
- K. ASTM C309 - Liquid Membrane-Forming Compounds for Curing Concrete.
- L. ASTM C494 - Chemical Admixtures for Concrete.
- M. WSDOT: Standard Specifications for Road, Bridge, and Municipal Construction, 2008 edition, by Washington State Department of Transportation and American Public Works Association.

1.3 SUBMITTALS

Refer to Section 01330 for general submittal requirements.

- A. Mix Design: Allow 10 days for review by Owner's testing service.
- B. Product Data: Provide data on joint filler, admixtures, and curing compounds.
- C. Certificate of Compliance: Submit certification by the materials and mix producers indicating that the materials and mixes are in compliance with these specifications. Certification shall be signed by the material and mix producers.
- D. Batch Tickets: Conform to ASTM C94.
- E. Placement Record.

1.4 QUALITY ASSURANCE

- A. Owner will employ the services of independent inspection and testing agencies for inspections and tests required for work of this Section. Contractor shall comply with requirements of the agencies during execution of the work.
- B. Perform work in accordance with ACI 301.
- C. Conform to WSDOT as applicable and as referenced herein.
- D. Conform to City standards and requirements.
- E. Obtain cementitious materials from same source throughout.

1.5 ENVIRONMENTAL REQUIREMENTS

- A. Hot Weather: Conform to ACI 305.
- B. Cold Weather: Conform to ACI 306.

PART 2 - PRODUCTS

2.1 FORM MATERIALS

- A. Form Materials: Conform to ACI 301.
- B. Wood Form Material: Surfaced construction grade lumber free of defects and of sufficient strength to maintain straight, true lines and smooth radii.
- C. Steel Forms: As suitable for the Work.
- D. Joint Filler: Premolded joint filler conforming to ANSI/ASTM D1751.

2.2 REINFORCEMENT

- A. Reinforcing Steel: ASTM A615; 40 ksi yield grade; deformed billet steel bars.
- B. Dowels: ASTM A615; 40 ksi yield grade, plain steel.

2.3 ACCESSORIES

- A. Curing Compound: Conform to WSDOT 9-23.
- B. Joint Sealant: Sonolastic Paving Joint Sealant by Sonneborn or approved equal.

2.4 CONCRETE MIXES

Conform to ASTM C94.

- A. Curbs, Gutters, and Sidewalks: Concrete shall be class 3000 (class 4000) for rolled curb and sidewalk, integral curb and sidewalk, and raised crosswalk), with air entrainment conforming to the requirements of WSDOT.
- B. Concrete mixes shall not contain calcium chloride.

2.5 SOURCE QUALITY CONTROL

Submit proposed mix design of each class of concrete to appointed firm for review prior to commencement of work. Tests on cement and aggregates will be performed to ensure conformance with specified requirements. Test samples in accordance with ACI 301.

2.6 WHEEL STOPS

Precast wheel tops of configuration shown on drawings or similar manufacturers standard configuration.

PART 3 - EXECUTION

3.1 EXAMINATION

Verify base course has been placed and properly compacted and is acceptable and ready to support paving and imposed loads. Verify gradients and elevations of base are correct. Start of Work of this Section will indicate Contractor's acceptance of existing conditions.

3.2 PREPARATION

Notify Architect minimum 48 hours prior to commencement of placing concrete.

3.3 FORMING

- A. Place and secure forms to correct location, dimension, and profile.
- B. Straight forms shall not be used to form curves.
- C. Assemble form work to permit easy stripping and dismantling without damaging concrete.
- D. Place joint filler vertical in position, in straight lines. Secure to form work during concrete placement.

3.4 JOINTS

- A. Place expansion and contraction joints as indicated on Drawings. Align curb, gutter, and sidewalk joints.
- B. Place joint filler between paving components. Recess top of filler 1/4 inch.
- C. Control Joints: As shown on Drawings. Control joints shall be tooled with a standard tool to a depth equal to at least 1/4 the thickness of the pour. Tool shall leave rounded edges and shall completely separate aggregate the full depth of the joint.
- D. Construction Joints: Plan execution of work so that construction joints occur at predetermined joint locations.

3.5 PLACING CONCRETE

- A. Place concrete in accordance with ACI 301.
- B. Ensure reinforcement, inserts, embedded parts, formed joints are in place and are not disturbed during concrete placement.
- C. Place concrete continuously between predetermined construction joints. Do not break or interrupt successive pours such that cold joints occur.
- D. Dowel all new concrete paving to existing.

3.6 FINISHING

- A. Concrete Paving Heavy broom finish.
- B. Place curing compound on exposed concrete surfaces immediately after finishing. Apply in accordance with manufacturer's instructions.

3.7 WHEEL STOPS

- A. Drill holes in concrete paving and dowel & glue wheel stops to paving as detailed.

3.8 FIELD QUALITY CONTROL

- A. Observations: Notify Architect at the following points during the progress of the Work. No subsequent Work shall be executed until Architect has had the opportunity to observe the condition and status of the Work.

1. Forms: When forms, base material, and embedded items are in place.
- B. Conform to City inspection requirements.
- C. Testing:
 1. Appointed testing agency will take cylinders and perform slump and air entrainment tests in accordance with ACI 301.
 2. Three concrete test cylinders will be taken for every 100 or less cubic yards of each class of concrete placed each day.
 3. One additional test cylinder will be taken during cold weather and cured on site under same conditions as concrete it represents.
 4. One slump test will be taken for each load of concrete upon delivery. Perform air entrainment test with each slump test.
- D. Contractor shall maintain records of placed concrete items. Record date, location of pour, quantity, air temperature, and test samples taken.
- E. Positive Drainage: Positive drainage is required for all paved areas regardless of any information shown on the drawings or specified herein. Notify Architect of any areas where positive drainage cannot be achieved. Positive drainage is achieved when water drains off paved areas within 30 minutes without ponding except ponding of less than 1/8 inch over any 5 square foot area will be accepted.
- F. Flood Testing: At completion of paving and prior to acceptance of Work, perform a flood test in the presence of the Architect to insure positive drainage of all areas.
- G. Replacement of Defective Work: Replace all new paving which does not achieve positive drainage or is otherwise defective. Patching is not acceptable.

END OF SECTION

PAVEMENT MARKING

PART 1 - GENERAL

1.1 SUMMARY

Provisions of the Bidding Requirements, Conditions of the Contract, and Division 1 apply to all Sections of this Project Manual. Refer to Table of Contents for complete list of Bidding Requirements, Conditions, and Sections included in the Project Manual.

- A. Work Included in This Section: Provide lines and symbols in parking lot, traffic ways, and other vehicular areas.
- B. Related Work in Other Sections: Refer to the following sections for related work:

32 13 13 for concrete paving.

1.2 REFERENCES

Listed publications form a part of this Section to the extent indicated by references thereto.

- A. WSDOT: Standard Specifications for Road, Bridge, and Municipal Construction, 2008 edition, by Washington State Department of Transportation and American Public Works Association, Section 8-22.
- B. WSDOT: Qualified Product List (QPL)

1.3 SUBMITTALS

Refer to Section 01 33 00 for general submittal requirements.

- A. Certificate of Compliance: Submit certification by the materials and mix producers indicating that the materials and mixes are in compliance with these specifications. Certification shall be signed by the material and mix producers.
- B. Product Data: Submit product data for paint.
- C. Manufacturer's printed installation and/or application instructions as required.

1.4 QUALITY ASSURANCE

Conform to WSDOT as applicable and as referenced herein. Conform to City standards and requirements.

1.5 DELIVERY STORAGE AND HANDLING

Comply with manufacturer's printed instructions.

1.6 PROJECT CONDITIONS

Conform to manufacturer's requirements for items being installed and materials being used.

PART 2 - PRODUCTS

2.1 MATERIALS (WSDOT - QPL Listed)

- A. Paint: Traffic Paint shall be one of the following approved paints:
 - 1. Rodda Paint Company – Standard White I.D. 7371, Yellow I.D. No 7372, 7382
 - 2. Ennis Paint Company – Norline – White I.D. No. 984761/ HW8W1; Yellow I.D. No. 984761/ HW8Y2
 - 3. Or Approved Equal

PART 3 - EXECUTION

3.1 EXAMINATION

Verify that pavement construction is complete and approved and that surface is ready for work of this Section. Start of Work shall indicate Contractor's acceptance of existing conditions.

3.2 PREPARATION

Contractor shall layout preliminary spotting for review by the Architect prior to start of marking pavement. Preliminary spotting shall be at appropriate frequency to allow Architect to determine conformance of layout. Prepare surfaces in accordance with Manufacturer's printed instructions for material being applied.

3.3 APPLICATION OF MARKINGS

- A. Painted Markings: Two coats of paint line are required. Apply a minimum wet thickness of 10 mil (160 square feet per gallon) for the first coat. Apply minimum wet thickness of 15 mil (120 square feet per gallon) of specified paint for second coat of paint.

3.4 FIELD QUALITY CONTROL

- A. Observations: Notify Architect at the following points during the progress of the Work. No subsequent work shall be executed until Architect has observed the status and condition of the Work.
 - 1. Preliminary spotting prior to pavement marking.
 - 2. Completion of pavement marking operations.
- B. Conform to County inspection requirements.
- C. Tolerances: Conform to WSDOT 8-22 as applicable.

3.5 MARKING MATERIAL SCHEDULE

All pavement marking shall be painted. Unless otherwise indicated on the drawings, the following applies:

- A. Striping: White paint for 4 in. wide parking stripes and other lines as may be indicated. Other colors as required by code.
- B. Directional Signs and Symbols: White paint for directional arrows, signs, and other markings and colors as may be indicated or as required by code.

END OF SECTION 32 17 23