



## **MEMORANDUM**

September 1, 2021

---

TO: All Potential Bidders

FROM: Roger Stanton, Capital Program Manager,  
Planning, Design & Development Services

SUBJECT: **Point Defiance Marina Complex – Utility & Repairs  
Project – Phase 1  
Project #: J2021-18 ADDENDUM NO. 01**

Attached, please find Addendum No. 01 to the above referenced bidding project. It is imperative that you acknowledge your receipt of this addendum on Page 2 of the Bidder's Proposal, by writing in that you have received and reviewed Addendum No. 01. If you do not acknowledge these changes on the bidding documents you turn in at the time of bid opening, your bid will be considered non-responsive.

If you have questions relating to the enclosed addendum, please do not hesitate to call Roger Stanton at 253-305-1082.

Attachment(s): **Addendum No 1 to Bid J2021-18 with attachments thereto:**

- 1. Revised FOR BID Drawings Dated 7/19/2021-  
Sheet S-1, Plan – Balcony, 8/30/21  
Sheet S-2, Details, 8/30/21**



## **ADDENDUM TO BID J2021-18**

### **Metropolitan Park District**

Department of Planning, Design and Development  
4702 South 19<sup>th</sup> Street  
Tacoma WA 98405

**CONSULTANT CONTACT: Roger Stanton, Capital Project Manager**  
rogers@tacomaparks.com

Date Prepared: **September 1, 2021** Bid Number: **J2021-18**

Addendum No.: **ONE (1)**

General Description: **Point Defiance Marina Complex -  
Utility & Repairs Project – Phase 1**

The following modifications are hereby made part of the contract documents:

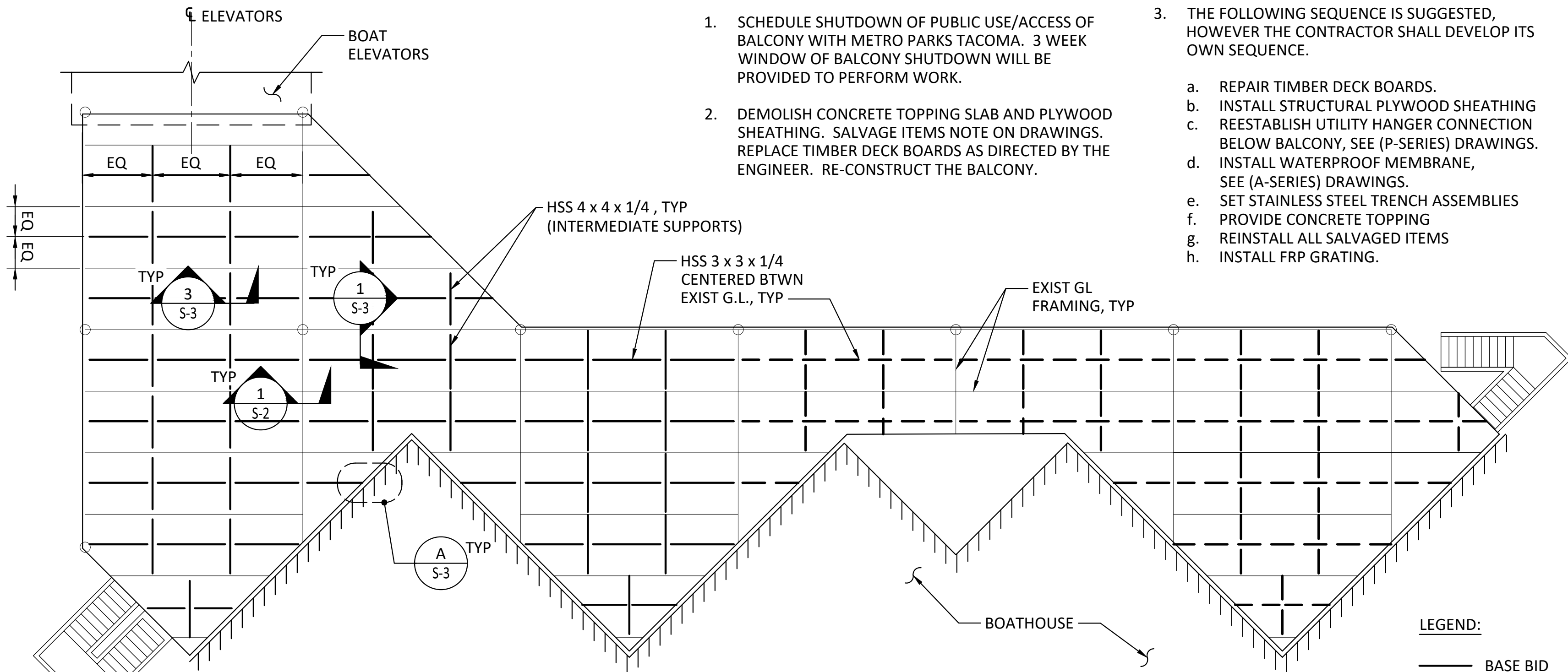
---

1. FOR BID Drawings Dated 7/19/2021 **Modification** as follows:

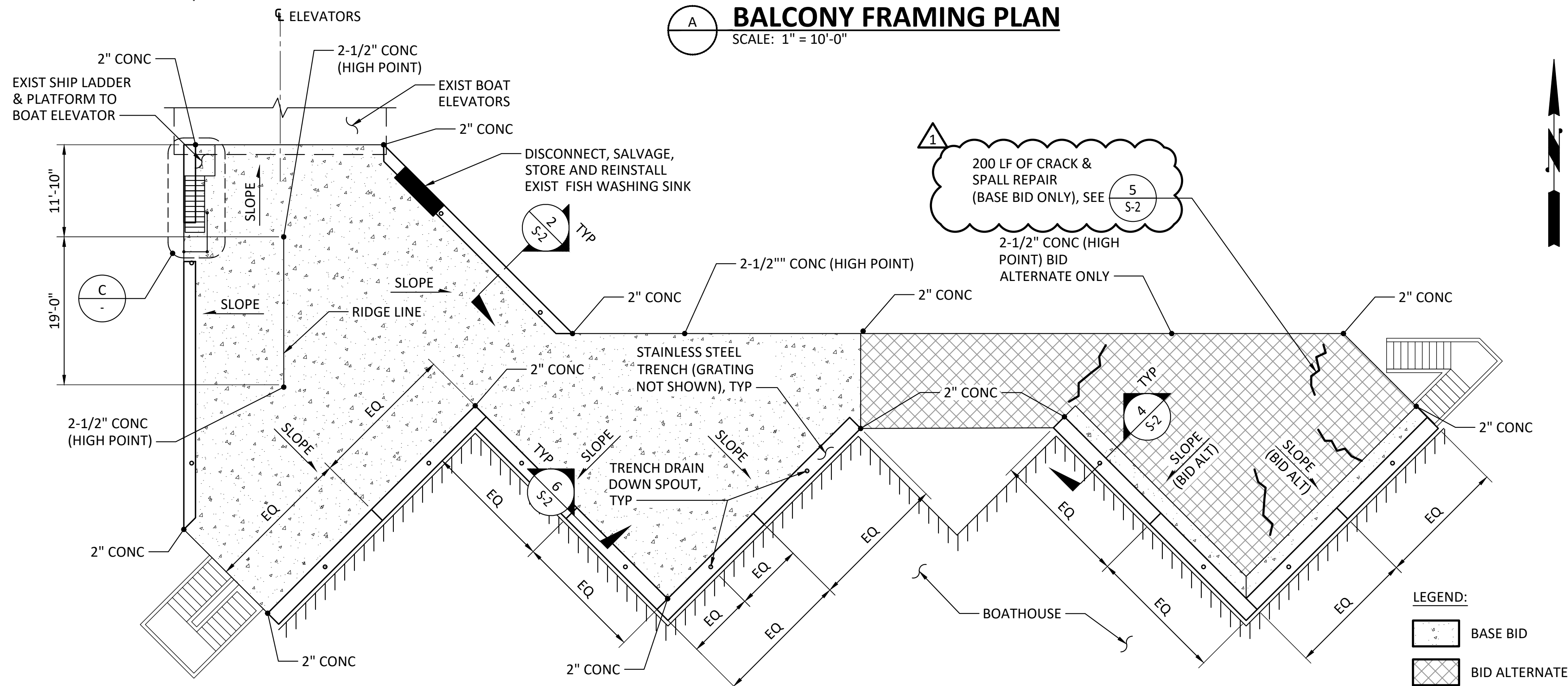
- a. Revised Sheet S-1, PLAN – BALCONY, 8/30/21
- b. Revised Sheet S-2, DETAILS, 8/30/21

NOTES:

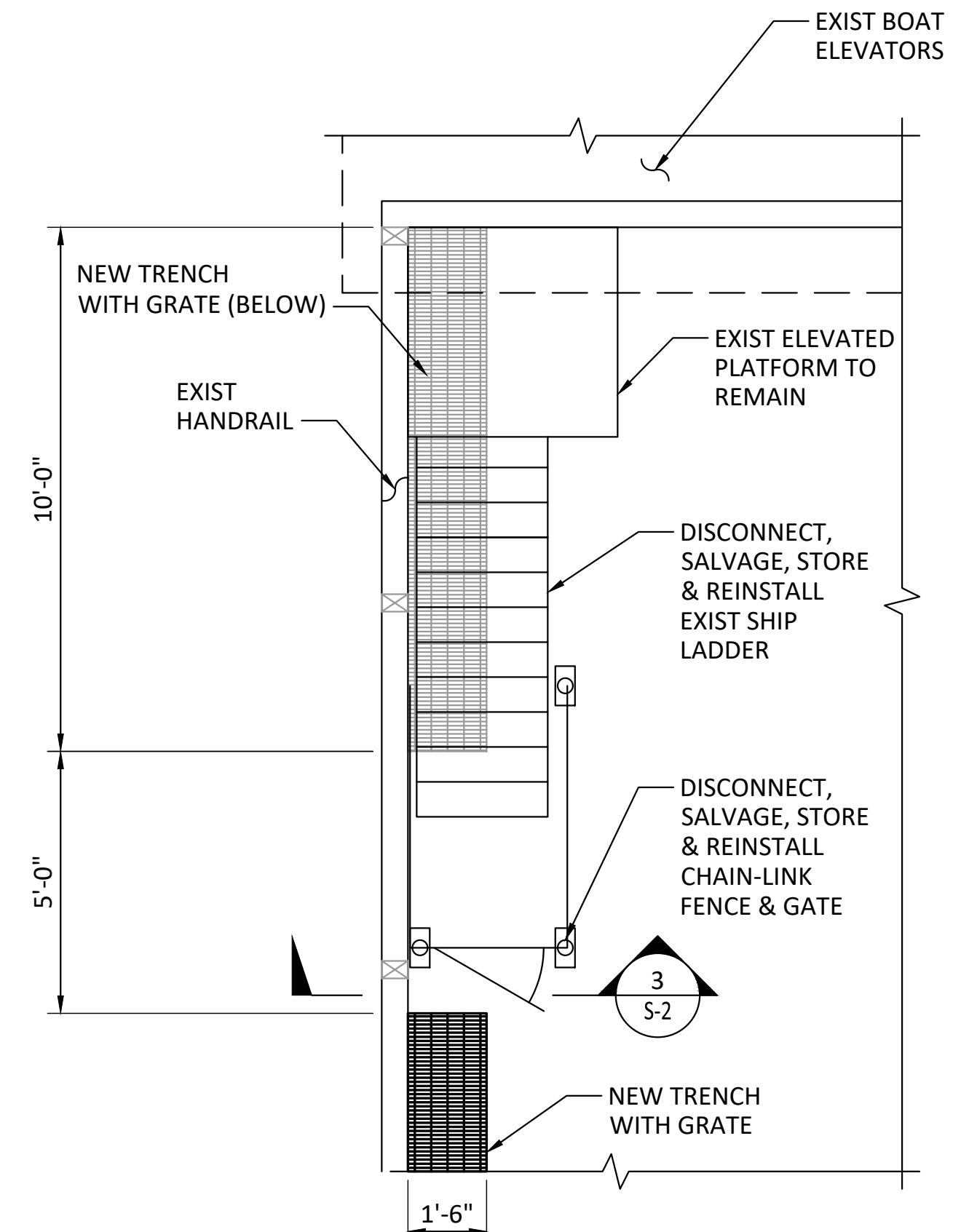
- SCHEDULE SHUTDOWN OF PUBLIC USE/ACCESS OF BALCONY WITH METRO PARKS TACOMA. 3 WEEK WINDOW OF BALCONY SHUTDOWN WILL BE PROVIDED TO PERFORM WORK.
- DEMOLISH CONCRETE TOPPING SLAB AND PLYWOOD SHEATHING. SALVAGE ITEMS NOTE ON DRAWINGS. REPLACE TIMBER DECK BOARDS AS DIRECTED BY THE ENGINEER. RE-CONSTRUCT THE BALCONY.
  - REPAIR TIMBER DECK BOARDS.
  - INSTALL STRUCTURAL PLYWOOD SHEATHING
  - REESTABLISH UTILITY HANGER CONNECTION BELOW BALCONY, SEE (P-SERIES) DRAWINGS.
  - INSTALL WATERPROOF MEMBRANE, SEE (A-SERIES) DRAWINGS.
  - SET STAINLESS STEEL TRENCH ASSEMBLIES
  - PROVIDE CONCRETE TOPPING
  - REINSTALL ALL SALVAGED ITEMS
  - INSTALL FRP GRATING.
- THE FOLLOWING SEQUENCE IS SUGGESTED, HOWEVER THE CONTRACTOR SHALL DEVELOP ITS OWN SEQUENCE.



LEGEND:  
— BASE BID  
--- BID ALTERNATE



LEGEND:  
[Pattern] BASE BID  
[Pattern] BID ALTERNATE



LEGEND:  
[Pattern] BASE BID  
[Pattern] BID ALTERNATE

FOR BID

MARK	REVISION DESCRIPTION	BY	APP.	DATE
1	ADDENDUM #1	CRE	JRG	8/30/21



**wsp**

WSP USA Inc.  
33301 9th Avenue South  
Suite 300  
Federal Way, WA 98003-2600  
TEL: (206) 431-2300  
FAX: (206) 431-2250



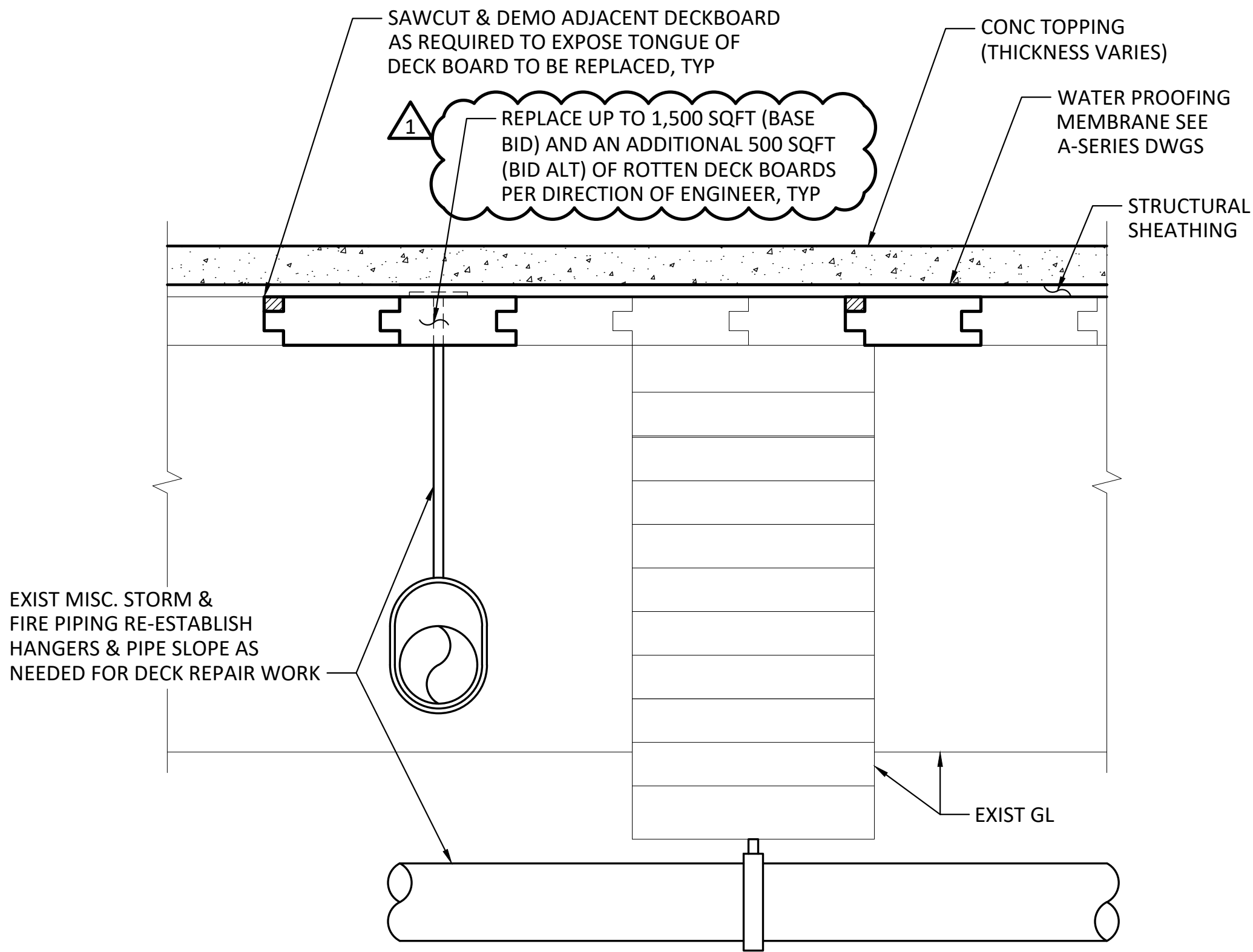
DRAWN BY	JDM
DESIGN BY	CRE
CHECK BY	JRG
PROJ MGR	JRG

**METRO PARKS TACOMA  
POINT DEFIANCE MARINA COMPLEX  
UTILITY & FACILITY REPAIRS**

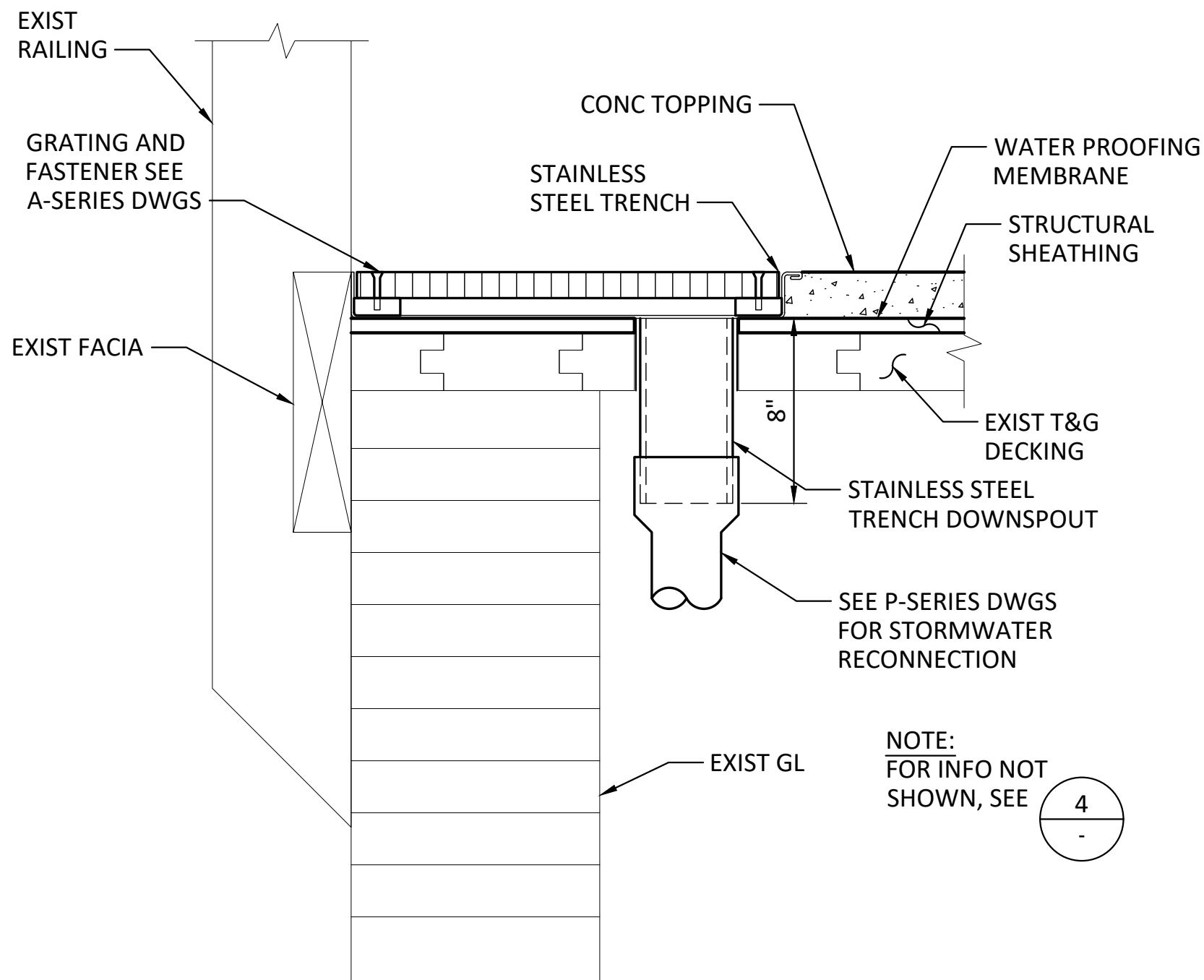
PLAN - BALCONY

DRAWING NO.	<b>S-1</b>
PROJECT NO.	31600009
DATE:	7/19/21
SHEET NO.	10 OF 30

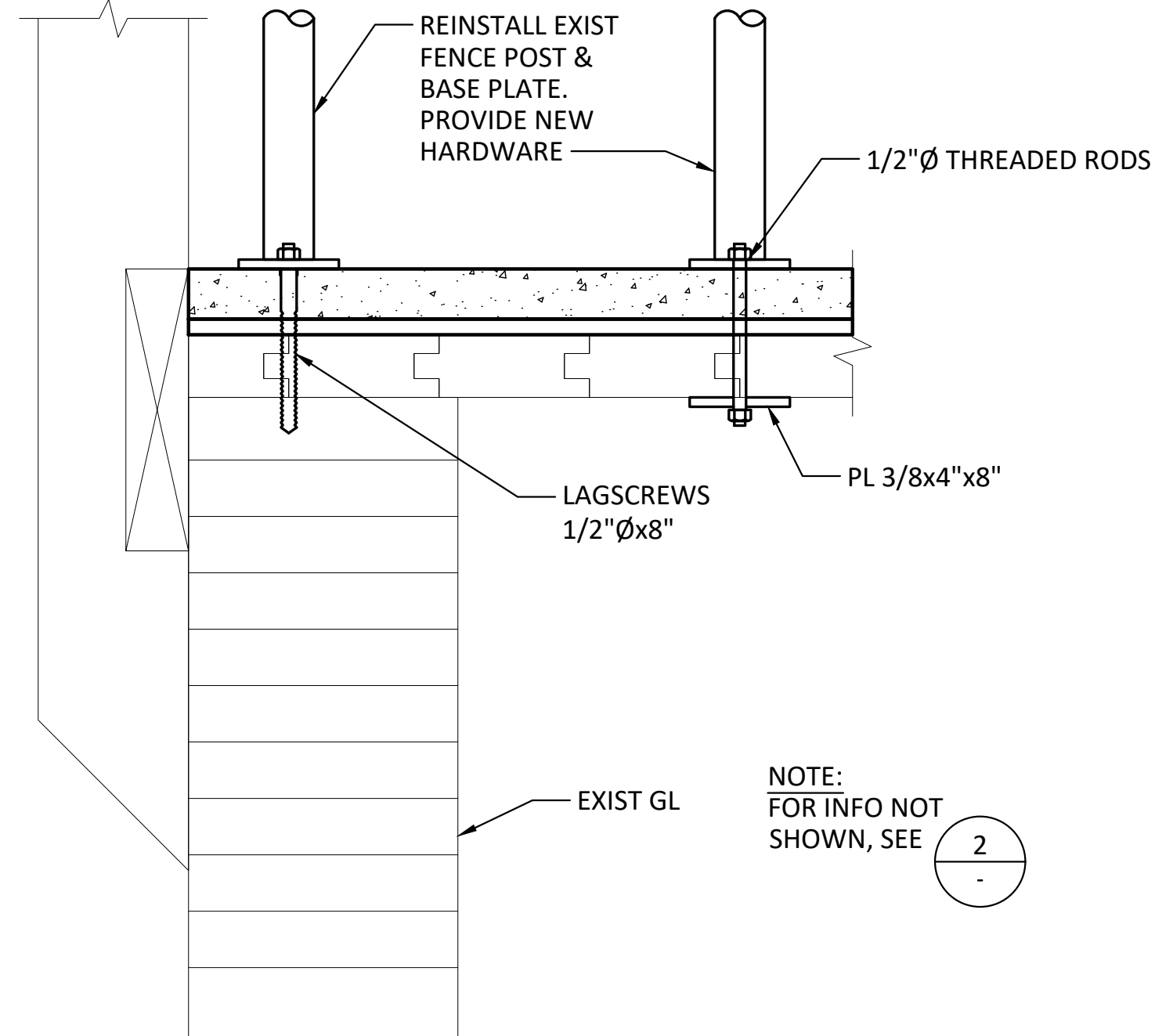




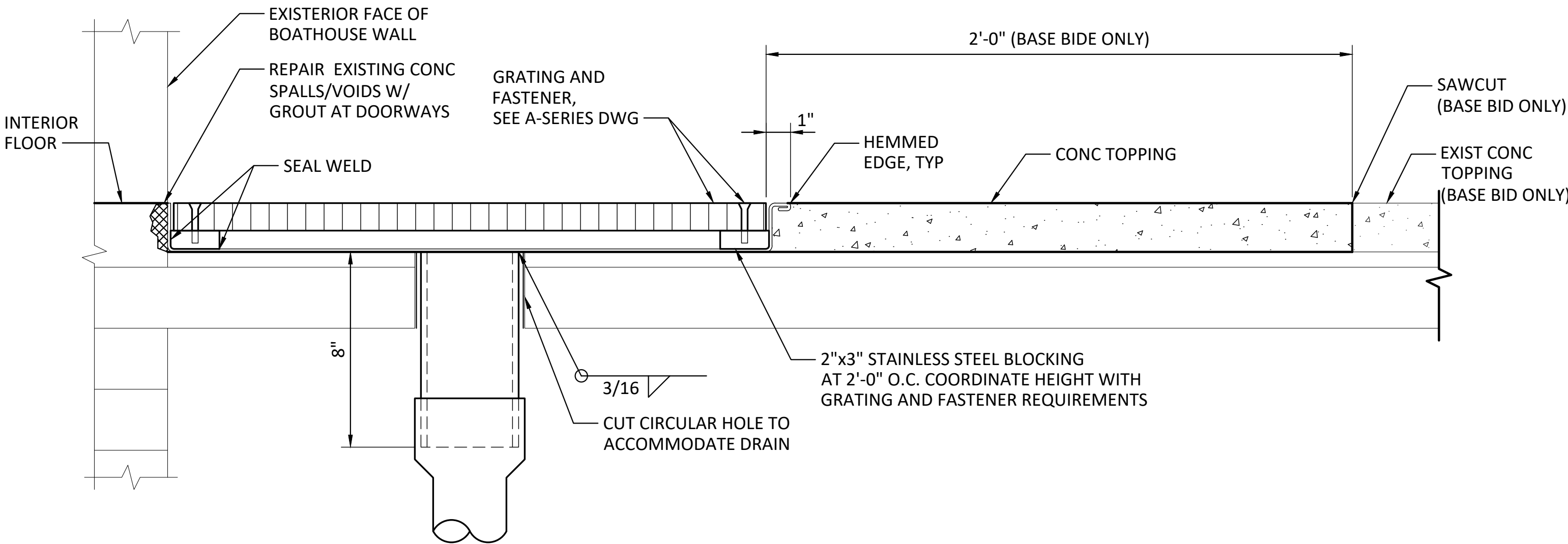
1  
S-1  
**SECTION - TYPICAL BALCONY REPAIRS**  
SCALE: 2" = 1'-0"



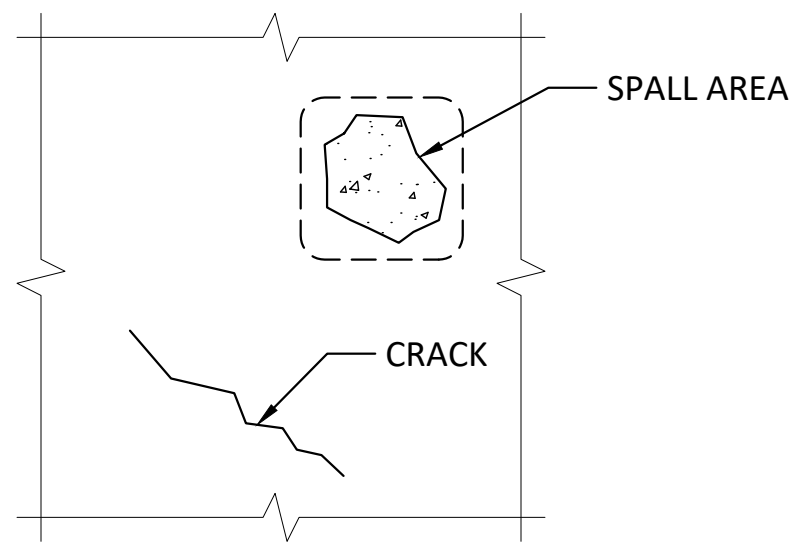
2  
S-1  
**SECTION - TRENCH AT RAILING**  
SCALE: 2" = 1'-0"



3  
S-1  
**SECTION - FENCE ANCHORAGE**  
SCALE: 2" = 1'-0"



4  
S-1  
**SECTION - TRENCH AT BUILDING**  
SCALE: 3" = 1'-0"



5  
S-1  
**DETAIL - SPALL OR CRACK REPAIR**  
SCALE: 6" = 1'-0"

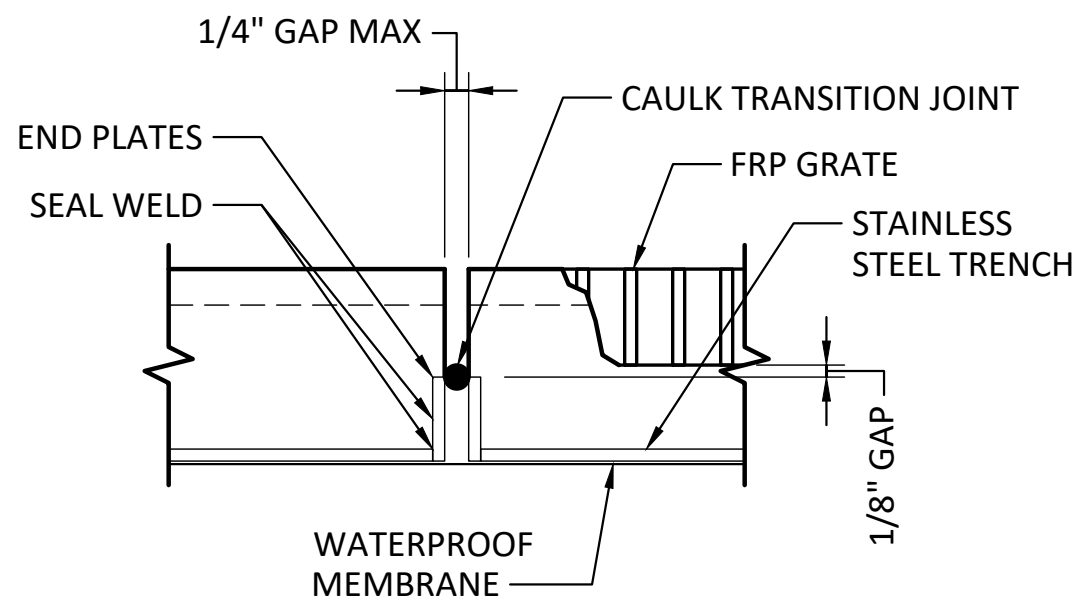
**SPALL & CRACK REPAIR NOTES:**

**SPALL OR DELAMINATION**

- SAWCUT 1 INCH DEEP SHOULDER AROUND THE PERIMETER OF SPALLED OR DELAMINATED AREA IN STRAIGHT LINES AS CLOSE AS POSSIBLE TO DEFECT, MINIMIZING REPAIR AREA. REMOVED DETERIORATED MATERIAL TO A LEVEL OF SOUND CONCRETE (DO NOT FEATHER EDGE) DO NOT DAMAGE EXISTING REINFORCING STEEL. LIMIT IMPACT HAMMER SIZE FOR CONCRETE REMOVAL TO 15 POUNDS. ALIGN IMPACT HAMMER AT A 60 DEGREE ANGLE OR SMALLER WITH RESPECT TO SURFACE.
- PREPARE CONCRETE AND EXPOSED REINFORCING STEEL IN ACCORDANCE WITH SPECIFICATIONS.
- PLACE REPAIRED MATERIAL BY TROWEL OR FORMED AND POURED IN ACCORDANCE WITH SPECIFICATIONS. SMOOTH TROWEL FINISH SURFACE TO MATCH ORIGINAL CONCRETE PROFILE MAINTAIN EXISTING CHAMFERS.

**CRACKS**

- FOR CRACKS WIDTHS LARGER THEN .020 INCH USE A HYDROPHOBIC POLYURETHANE FOAM FOR CRACK INJECTION.
- FOR CRACKS WIDTHS SMALLER THEN .020 INCH USE A POLYURETHANE SEALANT PRODUCT.
- PREPARE CRACKS FOR SEALANT BY PRESSURE WASHING AND DISPLACING DEBRIS FROM CRACK WITH COMPRESSED AIR. CRACKS SHALL BE DRY AND CLEAN PRIOR TO SEALING OR INJECTION.



6  
S-1  
**DETAIL - TRENCH END**  
SCALE: 6" = 1'-0"

FOR BID

1	ADDENDUM #1	CRE	JRG	8/30/21	
MARK	REVISION DESCRIPTION	BY	APP.	DATE	



WSP USA Inc.  
33301 9th Avenue South  
Suite 300  
Federal Way, WA 98003-2600  
TEL: (206) 431-2300  
FAX: (206) 431-2250



DRAWN BY JDM  
DESIGN BY CRE  
CHECK BY JRG  
PROJ MGR JRG

METRO PARKS TACOMA  
POINT DEFIANCE MARINA COMPLEX  
UTILITY & FACILITY REPAIRS

DETAILS

DRAWING NO. **S-2**  
PROJECT NO. 31600009  
DATE: 7/19/21  
SHEET NO. 11 OF 30